



**Glaschubeò™**

Ro-innleachd      Glasgow's  
Ealain              Gaelic  
Ghàidhlig        Arts  
Ghlaschu         Strategy

***2011 – 2014***



Glasgow Arts  
[www.glasgowlife.org.uk/gaelic-arts](http://www.glasgowlife.org.uk/gaelic-arts)  
0141 287 8967

## Cùl-fhiosrachaidh mu Leasachadh nan Ealan Ghàidhlig ann an Glaschu

Thòisich Comhairle Baile Ghlaschu a' nochdadh dealas a thaobh leasachadh nan Ealan Ghàidhlig ann an 2004, nuair a chuir iad an dreuchd a' chiad Oifigear Leasachaidh do na h-Ealain Ghàidhlig ann an Alba. Lean seo air adhart gun chiad Ro-Innleachd Ealain Ghàidhlig sa bhaile, a chaidh a chur air bhog ann an 2005 agus mar a' chiad sgrìobhainn de leithid ann an Alba, bha e a' foillseachadh phlanaichean glòir-mhiannach airson nan Ealan Ghàidhlig. Tha mòran air a thoirt gu buil thar nam bliadhnaichean mar thoradh air a' chiad ro-innleachd sin, tro shreath de chom-pàirteachasan agus de phròiseactan, a bha an dà chuid mòr agus beag.

Ann an cuid mhòr de shuidheachaidhean, choilean sinn seachad air amasan na ro-innleachd. Bho 2004, tha 19,000 neach air tachartasan Ealain Ghàidhlig a fhrithealadh, agus tha sinn air cur ri ar buidseat leasachaidh 400% le togail airgid tro chom-pàirtichean air an taobh a-muigh.

Tha an **Ro-Innleachd Ealain Ghàidhlig ùr 2011-2014** an dòchas togail air euchdan soirbheachail na ro-innleachd a bh' ann. Tha cuid den fheadhainn sin mar Ceòl 's Craic agus Fèis Ghlaschu, a-nis stèidhichte mar phàirt chunbhalach den t-saoghal chultarach sa bhaile, fhad 's a tha feadhainn eile mar am pìos dràma ainmeil 'Chan eil 'V' ann an Gàidhlig' agus an fhèis litreachail Leabhar 's Craic, nam pròiseactan a tha a' stiùireadh na slighe air adhart a dh'ionnsaigh leasachaidhean eile.

Tha Glaschu Beò air lèirsinn a chosnadh agus air tomhas mhòr de eòlas a thrusadh ann an co-cheangal ri Leasachadh Ealain Ghàidhlig ann an co-theacsa baile, a tha gun choimeas ann an Alba. 'S ann bhon t-sealladh seo a tha sinn a' foillseachadh le misneachd an dàrna Ro-Innleachd Ealain Ghàidhlig 2011-2014.



## Background to Gaelic Arts Development in Glasgow

Glasgow City Council began its commitment to developing Gaelic Arts in 2004 with the appointment of Scotland's first Gaelic Arts Development Officer. This was followed by the city's first Gaelic Arts Strategy, which was launched in 2005 and, as the first document of its kind in Scotland, set out ambitious plans for the development of Gaelic arts. Much has been achieved over the years as a result of that initial strategy, through a series of partnerships and projects, both large and small.

In many instances we exceeded the aims of the strategy. Since 2004, 19,000 people have attended Gaelic arts events, and we have enhanced our development budget by 400% through fundraising from external partners.

The new **Gaelic Arts Strategy 2011-2014** hopes to build on the successful achievements of the previous strategy. Some of these events such as Ceòl 's Craic and Fèis Ghlaschu, have become an established part of the cultural scene in the city, whilst others, such as the critically acclaimed theatre piece *No 'V' in Gaelic* and Leabhar's Craic (Gaelic literary festival) are projects that point the way to future developments.

Glasgow Life has gained an insight and amassed a body of experience in relation to Gaelic Arts Development in an urban context that is unique in Scotland. It is from this point that we confidently launch our second Gaelic Arts Strategy 2011-2014.





## Ealain Ghàidhlig ann an Glaschu – an co-theacsa làithreach

### Nàiseanta

Faodar a ràdh gur e stèidheachadh Alba Chruthachail sa Ghiblean 2010 an leasachadh as cudromaiche anns a' cho-theacsa nàiseanta do na h-Ealain Ghàidhlig, le raon-dleasanais ùr nàiseanta aig na h-Ealain Ghàidhlig. Ann an 2011 bidh Alba Chruthachail agus Fòram Ro-Innleachdail nan Ealan Ghàidhlig Nàiseanta a' leasachadh Ro-Innleachd Ealain Ghàidhlig Nàiseanta. Tha e cudromach gu bheil an dòigh smaoinichaidh mu thimcheall Ro-Innleachd Ealain Ghàidhlig Ghlaschu a' tuigsinn agus air aithneachadh ann am pròiseas leasachaidh na Ro-Innleachd Ealain Ghàidhlig Nàiseanta. Tha aonta Riaghaltas na h-Alba do Phlana Gnìomha nàiseanta Bhòrd na Gàidhlig gus an àireamh de luchd-labhairt na Gàidhlig a mheudachadh tro Ginealach Ùr na Gàidhlig, na phrìomh leasachadh agus tha Ro-Innleachd Ealain Ghàidhlig Ghlaschu air dòighean a chomharrachadh leis am bithear comasach air cur ri liubhairt a' phlana seo ann am baile Ghlaschu.

### Glaschu

Tha an co-theacsa don Ghàidhlig air atharrachadh gu mòr thar nan sia bliadhna a dh'fhalbh. Tha cuid de na h-atharrachaidhean sin mar thoradh dìreach air soirbheachadh na ciad Ro-Innleachd Ealain Ghàidhlig agus tagradh nan Ealan Ghàidhlig le Oifigear Leasachaidh nan Ealan Ghàidhlig sa bhaile. Tha feadhainn eile a' nochdadh leasachaidhean ealain is cultair nas fharsainge a tha a' tairgsinn chothroman dem faod Ealain Ghàidhlig feum a dhèanamh.



## Gaelic Arts in Glasgow – the current context

### National

By far the most significant development in the national context for Gaelic arts was the establishment of Creative Scotland (Alba Chruthachail) in April 2010 with a new national Gaelic Arts remit. In 2011 Creative Scotland and the National Gaelic Arts Strategic Forum will develop a National Gaelic Arts Strategy. It is important that the thinking around Glasgow's Gaelic Arts Strategy both recognises and is recognised in the process of developing the National Gaelic Arts Strategy. The Scottish Government's approval of Bòrd na Gàidhlig's National Action Plan (to increase the number of Gaelic speakers through Ginealach Ùr na Gàidhlig) is also a key development and Glasgow's Gaelic Arts Strategy has identified ways in which it can contribute to the delivery of this plan in the city of Glasgow.

### Glasgow

The context for Gaelic in Glasgow has changed significantly over the past six years. Some of these changes are a direct result of the successes of the first Gaelic Arts Strategy and the advocacy of Gaelic Arts by the city's Gaelic Arts Development Officer. Other changes reflect wider arts and cultural developments that offer opportunities for Gaelic arts to capitalise on.

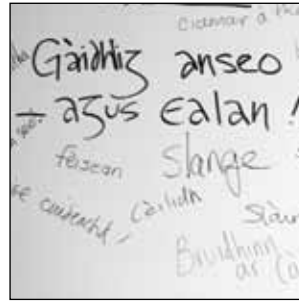
Tha na leanas am measg nan eisimpleirean:

- 'S e àite cruinneachaidh sòisealta beòthail a th' ann an **Ceòl 's Craic** agus tha e na àrd-ùrlar do chultar co-aimsireil Gàidhlig ann an Glaschu. Air a stèidheachadh le Comhairle Baile Ghlaschu agus buidhnean com-pàirteachais ann an 2004, tha e a-nis na bhuidheann fa leth le a bhòrd-stiùiridh fhèin ann am prìomh chom-pàirteachas le Alba Chruthachail agus Ionad nan Ealan Cho-aimsireil (CCA).
- Tha **Celtic Connections** air a dhol bho neart gu neart a thaobh nam prògraman Gàidhlig a th' aca le dealas gnèitheach an lùib Gàidhlig tarsainn air a' phrògram eadar-nàiseanta aca. Tha Celtic Connections a-nis a' toirt aogheachd do thachartas Gàidhlig trì latha anns an CCA ann an com-pàirteachas le Ceòl 's Craic.
- Tha àireamh sgoilearan **Sgoil Ghàidhlig Ghlaschu** air fàs bho 206 ann an 2004 gu timcheall air 600 ann an 2010. Thathar a' dèanamh rannsachadh a thaobh comasachd air bun-sgoil ùr tro mheadhan na Gàidhlig a chur air bhonn ann an ceann a deas Ghlaschu.
- Tha **Glaschu Beò** a' co-òrdanachadh prògram de chùrsaichean cànanain ann an Sgoil Ghàidhlig Ghlaschu agus Buidheann Ionnsachaidh Teaghlach anns an sgoil cuideachd, a tha a' tarraing mu 25% den choimhearsnachd phàrantan.
- Tha **Acadamaidh Rìoghail Ciùil & Dràma na h-Alba** (RSAMD), **Oilthigh Shrath Chluaidh** agus **Ionad na Pìobaireachd** uile a' tairgsinn chlasaichean ann an ceòl is òrain traidiseanta, a' gabhail a-steach ceum ann am Pìobaireachd. Tha an RSAMD air cothroman trèanaidh a mheudachadh do chleasaichean le Gàidhlig tro chom-pàirteachas ùr le Sabhal Mor Ostaig, a' Cholaiste Ghàidhlig san Eilean Sgitheanach.
- Chaidh Glaschu ainmeachadh mar **Bhaile Ciùil UNESCO** san Lùnastal 2008, a' gabhail àite mar an dàrna baile a-mhàin ann an Alba gu bhith na bhall de Lìonra Bhailtean Cruithachail UNESCO.
- **Iomairt Ghàidhlig Ghlaschu** – tha Comunn na Gàidhlig le taic bho Bhòrd na Gàidhlig, air **Iomairtean Gàidhlig** a stèidheachadh ann an 7 sgìrean. Tha a' bhuidheann ann an Glaschu air a bhith glè ghnòthaicheil le comataidh for-ghnìomhach ag adhartachadh àireamh de phròiseactan.

Examples include:

- **Ceòl 's Craic** is the vibrant social hub and platform for contemporary Gaelic culture in Glasgow. Set up by Glasgow City Council with partner agencies in 2004, it is now a separate organisation with its own board of management and key partnership with Creative Scotland and the Centre for Contemporary Arts (CCA).
- **Celtic Connections** has grown from strength to strength in relation to its Gaelic programming with an intrinsic commitment to Gaelic across its international programme. Celtic Connections now host a three day Gaelic event at the CCA in partnership with Ceòl 's Craic.
- **Sgoil Ghàidhlig Ghlaschu's** school role has grown from 206 in 2004 to around 600 in 2010. A new Gaelic medium primary school is being investigated in the south side of Glasgow.
- **Glasgow Life** co-ordinates a programme of language courses at Sgoil Ghàidhlig Ghlaschu and a Family Learning Group also at the school which attracts around 25% of the Gaelic parent community.
- **The Royal Scottish Academy of Music & Drama** (RSAMD), **Strathclyde University** and **The Piping Centre** both offer classes in traditional music and song, including a degree in Piping. The RSAMD has increased its training opportunities for Gaelic speaking actors through a new partnership with Sabhal Mor Ostaig, the Gaelic College in Skye.
- Glasgow was appointed the **UNESCO City of Music** in August 2008 and is only the second Scottish city to join the UNESCO Creative Cities Network.
- **Iomairt Ghàidhlig Ghlaschu** - Comunn na Gàidhlig with support from Bòrd na Gàidhlig, has established Iomairtean Ghàidhlig (Gaelic Language Initiatives) in seven areas. The group in Glasgow has a very dynamic and pro-active committee who are taking forward a number of projects.





- Chaidh **Fèis Ghlaschu** do dhaoine òga a chur air bhog mar a' chiad Phròiseact Ealain Ghàidhlig le Comhairle Baile Ghlaschu agus buidhnean com-pàirteachais eile ann an 2004, agus tha i a-nis anns an ochdamh bliadhna air a ruith gu neo-eisimeileach, le còrr agus 100 neach òg le Gàidhlig a' frithealadh gach bliadhna.
- Cha robh **Ùr-Sgeul**, seòrsachadh ficsean Chomhairle nan Leabhraichean, ach air ùr-thòiseachadh o chionn sia bliadhna agus a-nis ann an 2010 tha fichead 's a naoi tiotal ùr air a thoirt gu buil, le fichead nobhail agus naoi leabhraichean de sgeulachdan goirid nam measg. An cois iad sin, tha còig leabhraichean labhairteach ùr (CD/DVD) agus dà CD cho-obrachail leis Na Gathan, a' dèanamh pòsadh eadar ceòl roc agus litreachas.
- Ann an com-pàirteachas leis a' BhBC, chuir MG ALBA an t-seirbheis didseatach Gàidhlig, BBC Alba, air bhonn ann an 2008, agus tha MG ALBA / BBC Alba a' leantainn air adhart a' dèanamh cinnteach gu bheil prògraman telebhisean àrd-ghnèitheach ann an Gàidhlig rim faotainn le daoine air feadh Alba.
- **Glaschu Eadar-nàiseanta** – Chaidh an fhèis ealain lèirsinneach eadar-nàiseanta seo a chur air bhog ann an 2008 agus tha i na prìomh fhèis sa bhaile. Tha dàimh a tha a' sìor fhàs aig an fhèis le Sgoil Ghàidhlig Ghlaschu agus leis na h-Ealain Ghàidhlig, tron phrògram ionnsachaidh aca.
- 'S ann an **Oilthigh Shrath Chluaidh** a tha a' chuid mhòr den luchd-teagaisg Gàidhlig san dùthaich a' faighinn an cuid foghlaim. Tha aon neach ann an còignear de na h-oileanaich uile a tha a' sgrudadh Gàidhlig no Ceiltis ann am Foghlam Àrd-Ìre ann an Alba, ag ionnsachadh ann an Oilthigh Ghlaschu.
- Tha **Trongate 103**, (prìomh ghoireas ealain lèirsinneach don bhaile, fhosgladh ann an 2009) a' leasachadh co-theacsa Ealain Ghàidhlig às còmhnaidheachd Ealain Ghàidhlig trì mìosan, a thuilleadh air soidhnichean Gàidhlig is obair clastinn san togalach.

- **Fèis Ghlaschu** (Arts Festival for young people) launched as the first Gaelic Arts Project by Glasgow City Council with partner agencies in 2004. Now in its eighth year, it is independently managed and has annual attendances of over 100 young Gaelic speakers.
- **Ùr-Sgeul**, (Gaelic Books Council Fiction brand) had barely started six years ago and now in 2010 there are twenty nine new titles comprising twenty novels and nine short story volumes. To accompany these there have been five new talking books (CD/DVD) and also two collaborative CDs with Na Gathan, marrying rock-music and literature.
- The **BBC / MG ALBA** partnership launched the BBC Alba digital channel in 2008. In December 2010 the station welcomed the decision by the BBC Trust to establish the channel on Freeview which will result in an increase in its audience.
- **Glasgow International** – the bi-annual international festival of visual art was launched in 2008 and is a major event for the city. Through their learning programme they are developing relationships with Sgoil Ghàidhlig Ghlaschu and Gaelic Arts.
- The **University of Strathclyde** is the main provider of Gaelic teacher education in the country. One in five of all students studying Gaelic or Celtic studies in Higher Education in Scotland are studying at the University of Glasgow.
- **Trongate 103** (a major visual arts resource which opened in 2009) is developing a Gaelic arts context following a three month Gaelic arts residency and installation of Gaelic signage and audio work in the building.

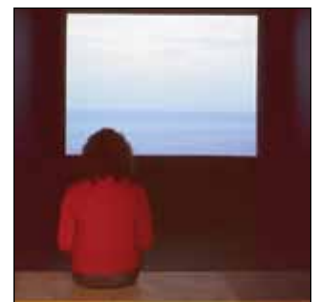
## Glaschu agus an Roinn Chultarach

Nochd sgrùdadh air Ealain & Cultar Gàidhlig le Comhairle Bhaile Ghlaschu gu bheil fìor chomas ann air fàs a thoirt air luchd-èisteachd ùr ealain is cultar Gàidhlig sa bhaile, a' dol fada seachad air an tuigse a tha aig daoine do ealain Ghàidhlig – Mòdan Nàiseanta is Dannsa Gàidhealach – gu prògram ghnìomhachdan a tha nas 'co-aimsireil agus nas sòisealta'. Ann an sgrùdadh eile le Glaschu Beò ann an 2010, tha Aithisg Myerscough a' cur Ghlaschu aig teis meadhain cruthachalachd ann an Alba. Tha Glaschu air a chomharrachadh mar am baile sa bheil an roinn ealain lèirsinneach as beòthaile agus aig a bheil an dùmhachd as motha de bhuidhnean a tha a' toradh obrach ùr taobh a-muigh Lunnainn. Tha tionndadh teachd-a-steach aig roinn nan ealan is cultar ann an Glaschu, le taic tro leathnachadh is tagradh na sgioba Leasachaidh Ealain aig Glaschu Beò, de mu £186 millean air a dhèanamh suas de mu 186 buidheann proifeiseanta thar gach taobh de na h-ealain. Tha coimhearsnachd chruthachail na h-Alba cuimsichte air Glaschu, a tha na dhachaigh do 41% de chleasaichean, dhannsairean agus chraoladairean na dùthcha, 38% de luchd-ciùil agus 29% de a luchd-ealain agus dealbhadairean grafaigeach. 'S e Glaschu prìomh àite trèanaidh na h-Alba san obair chultarach tro Sgoil Ealain Ghlaschu, RSAMD - colaiste ciùil is dràma nàiseanta na h-Alba agus Theatar Nàiseanta na h-Alba, leis na dhà mu dheireadh air am Plana Ealain Ghàidhlig fhèin a thoirt gu buil o chionn ghoirid. Sa cho-theacsa seo, tha Glaschu Beò ann an sàr àite gus Prògram Ealain Ghàidhlig co-aimsireil baile a leasachadh ann an Alba.

## Glasgow and the Cultural Sector

A study commissioned by Glasgow City Council<sup>1</sup> on Gaelic Arts & Culture showed that there is great potential to grow a new audience for Gaelic arts and culture in the city. Going beyond what many people narrowly perceive as Gaelic arts i.e. National Mods and Highland Dancing, to a more 'contemporary' and 'sociable' programme of activities.<sup>2</sup> In a further study by Glasgow Life, The Myerscough Report<sup>3</sup> places Glasgow at the centre of creativity in Scotland. Glasgow is identified as having the liveliest visual arts sector and has the biggest concentration of organisations producing new work outside London. The arts and cultural sector in Glasgow, supported through development and advocacy by the Arts Development team at Glasgow Life, has a turnover of around £186 million and comprises of around 186 professional organisations across artform. Scotland's creative community is concentrated in Glasgow which is home to 41% of the country's actors, dancers and broadcasters, 38% of its musicians and 29% of its arts and graphic designers. Glasgow is Scotland's major centre for training in the cultural profession through Glasgow School of Art, Scotland's national conservatoire RSAMD and the National Theatre of Scotland, the latter two having recently developed their own Gaelic Arts Plans. In this context, Glasgow Life is ideally placed to develop a contemporary urban Gaelic Arts Programme in Scotland.

- <sup>1</sup> Culture & Leisure services before Glasgow Life became a charity
- <sup>2</sup> Glasgow Grows Audiences, Gaelic Arts and Culture Audience Development: Research, April 2007
- <sup>3</sup> Myerscough, J, Glasgow Cultural Statistics Digest, (Forthcoming 2011)





## Glaschu Beò

Tha Glaschu Beò a' liubhairt raon fharsaing de sheirbheisean cultarach is spòrs às leth Comhairle Baile Ghlaschu. Mar phàirt den dreuchd seo, tha prìomh àite aig Glaschu Beò ann an cur taic ri cultar saidhbhir Gàidhlig Ghlaschu, sa bhitheantas tro ionnsachadh coimhearsnachd is teaghlach, a phrògraman Ealain Ghàidhlig agus a ro-innleachd Ealain Ghàidhlig, cruinneachaidhean sna leabharlannan a tha a' sìor fhàs, seirbheis taigh-tasgaidh agus a chuid taic do thachartasan is do shubhachasan.

Tha an t-uallach air a chur air Glaschu Beò grunn thaobhan de Phlana Gàidhlig a' bhaile a liubhairt, a' gabhail a-steach prògram leasachaidh air mothachadh gnìomhach don Ghàidhlig le luchd-obrach, gus dèanamh cinnteach gu bheil planadh a' Chompanaidh in-ghabhalach a thaobh Gàidhlig agus na Ro-Innleachd Ealain Ghàidhlig.

Tha an sgioba Leasachaidh Ealain aig Glaschu Beò ag obair thar ceithir raointean cuspaireil agus tha an Ro-Innleachd Ealain Ghàidhlig a' freagairt orra sin, ag obair tarsainn eòlas speisealta na sgioba ealain.

**Ealain agus Slàinte is Sunnd** - A' cleachdadh ealain gus builean deimhinneach slàinte adhartachadh thar raon de cho-theacsan, a' gabhail a-steach na Seirbheis Slàinte Nàiseanta (NHS), luchd-cleachdaidh na seirbheis shòisealta, adhartachadh air dòigh-beatha fhallain agus slàinte inntinneil.

**Ealain agus Ionnsachadh** - A' cleachdadh ealain mar inneal ionnsachaidh ann an suidheachaidhean foirmeil is neo-fhoirmeil, agus aig gach aois is gach ìre den bheatha, a' gabhail a-steach leasachadh sgilean.

**Ealain agus Co-ionannachdan** - A' dèanamh cinnteach à co-ionannachd a thaobh ruigsinneachd air eòlas ealain agus air ealain fhèin mar mheadhan air modh taisbeanaidh.

**Leasachadh agus Ùr-ghnàthachadh Cruth-ealain** - A' cur taic ri leasachadh cruthachail, obair ùr agus cleachdaidhean ealanta ùra. A' cur taic ri agus a' leasachadh bun-structar nan ealan ann an Glaschu.

## Glasgow Life

Glasgow Life delivers a wide range of cultural and sporting services on behalf of Glasgow City Council. As part of this remit, Glasgow Life plays a key role in supporting Glasgow's rich Gaelic culture, predominantly through its community and family learning, its Gaelic arts programmes and strategy, its developing library collection, its museum service and its support of events and celebrations.

Glasgow Life is charged with delivering a number of aspects of the city's Gaelic Language Plan, which includes an active Gaelic awareness development programme with staff to ensure that the Company's planning is inclusive of Gaelic and the Gaelic Arts Strategy.

The Arts Development team at Glasgow Life work across four themed areas and The Gaelic Arts Strategy responds to these, working across the specialist knowledge of the arts team.

**Arts and Health and Well-Being** - Using art to promote positive health outcomes across a range of contexts including National Health Service, social work service, healthy lifestyle promotion and mental health.

**Arts and Learning** - Using art as a tool for learning in both formal and informal settings, and at all ages and stages of life, including skills development.

**Arts and Equalities** - Ensuring equality of access to the experience of art, and to art as a means of expression.

**Artform Development and Innovation** - Supporting creative development, new work and new artistic practices. Supporting and developing the arts infrastructure of Glasgow.

Tha an Ro-Innleachd Ealain Ghàidhlig 2011-2014 a' cur roimhe:

- ìomhaigh obair ealain Ghàidhlig adhartachadh is àrdachadh ann an com-pàirteachas le buidhnean ealain Ghàidhlig, gus ealain Ghàidhlig a leasachadh thar gach cruth de na h-ealain
- ceanglaichean a leasachadh le com-pàirtichean ùra agus com-pàirtichean a th' ann, thar roinn nan ealan ann an Glaschu
- ùrachadh air Ro-innleachd Leasachaidh Luchd-frithealaidh 2007
- cur ris an deasbad air solar nan ealan Ghàidhlig ann an Alba
- bun-structar a thogail do Ealain Ghàidhlig ann an Alba
- iomairtean ealain Ghàidhlig a leasachadh mu choinneamh bheàrnan san t-solar

Tha eòlas sònraichte aig sgioba nan oifigearan Leasachaidh Ealain aig Glaschu Beò air in-ghabhail sòisealta, ealain lèirsinneach, Gàidhlig, litreachas, clann agus daoine òga, iomadachd cultarach agus còig prògraman sgìreil speisealta.

The Gaelic Arts Strategy 2011-2014 will:

- promote and raise the profile of Gaelic arts
- work in partnership with Gaelic arts agencies to develop Gaelic arts across artform
- develop links with existing and new partners across the arts sector in Glasgow
- update the 2007 Audience Development Strategy
- contribute to debate on Gaelic arts provision in Scotland
- build an infrastructure for Gaelic arts in Glasgow
- develop Gaelic arts initiatives to relation to gaps in provision.

The team of Arts Development officers at Glasgow Life have specialist knowledge in social inclusion, visual art, Gaelic, literature, children and young people, cultural diversity, and five city areas.





## Ro-Innleachd Ealain Ghàidhlig 2011-2014

Tha còig raointean cuspaireil ann an Ro-Innleachd nan Ealan Ghàidhlig: (1) com-pàirteachasan ro-innleachdail (2) ionnsachadh (3) cleachdadh (4) ìomhaigh agus (5) rannsachadh. Tha na cuspairean sin a' freagradh air Plana Gàidhlig a' bhaile. Airson mion-fhiosrachadh mu gach cuspair, faicibh an Clàr Mholaidhean a tha an lùib seo.

### 1. Com-pàirteachasan Ro-innleachdail

Bidh soirbheachadh nan Ealan Ghàidhlig ann an Glaschu an eisimeil obair làidir com-pàirteachais agus co-thaobhadh air goireasan a tha cuimsichte a dh'ionnsaigh coileanadh air cinn-uidhe choitcheann. Thathar a' tuigsinn gu bheil coimhearsnachd Ghàidhlig Ghlaschu agus Alba beag agus gu bheil e riatanach feum a dhèanamh de dhòighean obrach a tha dòchasach agus co-obrachail gus ìomhaigh a thogail agus iarrtas is goireasan a ghineadh.

Bidh liubhairt na Ro-Innleachd Ealain Ghàidhlig an crochadh air taic bunaiteach bho bhun-structar com-pàirteachais air ùr-chruthachadh am measg raon de chom-pàirtichean sean agus ùr, air feadh a' bhaile agus gu nàiseanta. Tha an Ro-Innleachd Ealain Ghàidhlig 2011-2014 ag amas air a bhith ag obrachadh le mu 20 buidheann com-pàirteachais ùr sa bhaile agus air taic a chur ri Fòram Nàiseanta na Ro-Innleachd Ealain Ghàidhlig agus Alba Chruthachail ann an leasachadh Ro-Innleachd Nàiseanta nan Ealan Ghàidhlig. Bidh Glaschu a' sireadh ri a chomas ann an cur ri leasachadh ro-innleachdan ealain Ghàidhlig nàiseanta a thoirt gu buil tro bhith a' cur ri chèile prògram ealain Ghàidhlig co-aimsireil baile, a bhios a' comharrachadh a' bhaile ann an co-theacsa nàiseanta.

Bidh com-pàirtichean air feadh a' bhaile agus gu nàiseanta a' cur taic ri Ro-Innleachd Ealain Ghàidhlig 2011-2014 le bhith a' com-pàirteachadh ann an coinneamhan bliadhnail, a' co-obrachadh far a bheil e ìomchaidh ann an leasachadh Ealain Ghàidhlig ann an Glaschu, a' co-roinneadh fiosrachaidh is lìonraidhean agus a' comharrachadh raointean sa bheil ùidh choitcheann.



## Gaelic Arts Strategy 2011-2014

There are five themed areas in the Gaelic Arts Strategy: (1) strategic partnerships; (2) learning; (3) use; (4) profile and (5) research. These themes respond to the city's Gaelic Language Plan. For details on each theme please see Table of Recommendations inserted in to this document.

### 1. Strategic Partnerships\*

The success of Gaelic arts in Glasgow will be reliant on strong partnership working, and alignment of resources geared towards achieving common goals. It is recognised that Glasgow and Scotland's Gaelic community is small and needs to capitalise on positive and collaborative ways of working to improve its profile and generate demand and resources.

The delivery of the Gaelic Arts Strategy will be underpinned by the creation of a refreshed partnership framework amongst a range of partners, old and new, city-wide and national. The Gaelic Arts Strategy 2011-2014 aims to work with around 20 new partner organisations in the city and to support the National Gaelic Arts Strategy Forum and Creative Scotland in developing the National Gaelic Arts Strategy. Glasgow will seek to realise its potential to contribute to the development of national Gaelic arts strategies through developing a contemporary, urban Gaelic arts programme that reflects the city in this national context.

The Gaelic Arts Strategy's city-wide and national partners will support the Gaelic Arts Strategy 2011-2014 by participating in annual meetings, collaborating where appropriate in Gaelic arts development in Glasgow, sharing information and networks and identifying areas of common interest.

## 2. Ionnsachadh

Tha an Ro-Innleachd Ealain Ghàidhlig a' mion-chomharrachadh Prògram Ealain Ghàidhlig do Sgoil Ghàidhlig Ghlaschu tro ghoireas ùr-ghnàthach Òrain Ghàidhlig agus gnìomhachdan eile a bhios a' ceangal a-steach le seirbheisean foghlaim agus buidhnean ro-sgoile air feadh a' bhaile. Seo a' chiad turas a tha Ro-Innleachd Ealain Ghàidhlig air ceangal a-steach do ghoireas Foghlaim Gàidhlig. Tha dealas ann cuideachd a thaobh cafaidhean cànanain aig tachartasan Ealain Ghàidhlig agus aig bùithtean-obrach Gàidhlig airson an luchd-ealain uile a tha a' cur ris a' phrògram againn.

## 3. Cleachdadh

Bidh leasachadh cruth-ealain na eileamaid leantainneach den phlana againn thar nan trì bliadhna a tha ri teachd. Thar nan cruthan ealain, bidh sinn ag adhartachadh deasbaid, a' cruthachadh fhòraman is Ìonraidhean agus a' tomhais bheachdan. Bheir seo comas don Ro-Innleachd Ealain Ghàidhlig a bhith sùbailte agus freagairteach do leasachaidhean cruthachail ùra. Tha sinn a' moladh gum bi na leasachaidhean sin thar nan cruthan ealain air an deasbad gach bliadhna tro thachartas com-pàirteachais sa bhaile.

## 4. Ìomhaigh

Bidh sinn a' leasachadh nan Ealan Ghàidhlig an taobh a-staigh Glaschu Beò tro dhiofar iomairtean m.e. sgeama thabhartasan cultarach, buidhnean ealain air am prìomh mhaoineachadh no tro phròiseactan, cuairt thursan coimhearsnachd agus leasachaidhean ro-innleachdail uile san àm ri teachd an taobh a-staigh leasachadh ealain le Glaschu Beò. Bidh sinn a' meudachadh ìomhaigh na Gàidhlig tro eadar-ghabhailean faicsinneach sa bhaile, rannsachadh prìomh thachartasan sa bhaile (le buidhnean nàiseanta agus air feadh a' bhaile) mar phàirt de shubhachasan Geamannan a' Cho-fhlaitheis 2014, agus ag adhartachadh 's a' togail ìomhaigh na Gàidhlig tro chom-pàirteachasan le fèisean agus àiteachan cruinneachaidh.

## 2. Learning\*

The Gaelic Arts Strategy introduces a Gaelic Arts Programme for Sgoil Ghàidhlig Ghlaschu through an innovative Gaelic Song resource and other activities linking in with education services and pre-five groups across the city. This is the first time a Gaelic Arts Strategy has linked in with a Gaelic Education resource. There is also a commitment for language cafés at Gaelic Arts events and Gaelic language workshops for all artists and musicians who contribute to our artistic programme.

## 3. Use\*

Artform development will be an on-going element of our plan over the next three years. We will promote discussion across artforms. This will enable the Gaelic Arts Strategy to be flexible and responsive to new creative developments. It is our recommendation that these developments are discussed annually through a partnership event in the city.

## 4. Profile\*

We will develop Gaelic arts within Glasgow Life through various initiatives e.g. the cultural grants award scheme, core and project funded arts organisations, the community touring circuit and all future strategic developments within arts development in Glasgow Life. We will compliment and reinforce Gaelic arts through Glasgow Life services delivered through the museum, library, arts venues, festivals and events in the city.

We will increase the profile of Gaelic language through visible creative interventions in the city, researching flagship events (with city-wide and national partners) as part of the 2014 Commonwealth Games celebrations and promote and profile Gaelic through partnerships with festivals and venues.





## 5. Rannsachadh

Mar phàirt den chiad Ro-Innleachd Ealain Ghàidhlig 2006-09, ghabh Glaschu Beò os làimh le buidhnean com-pàirteachais 'clàr-obrach ùr rannsachaidh, sgrùdadh eachdraidheil agus cultarach ... gus tuigse nas doimhne air dearbh-aithne Gàidhlig achomasachadh. Chaidh seo a choileanadh tro Ro-innleachd is Rannsachadh Leasachadh Luchd-frithealaidh (2007) agus Sgrùdadh Buaidh Eaconamach nan Ealan Ghàidhlig air Glaschu (2009).

Tha an Ro-Innleachd Ealain Ghàidhlig a' gabhail ris na smuaintean sin agus bu mhath leotha cudromachd rannsachaidh air Ealain Ghàidhlig àrdachadh nas motha. Tha seo gu h-àraid fìor anns an fheum air cho cudromach 's a tha e na h-ealain a cheangal ri togail cànan. Tha na h-ealain a' solarachadh chothroman air an cànan a dhèanamh sòisealta, mar àite ruigsinneach neo-fhoirmeil thar farsaingeachd ionnsachaidh agus na àrd-ùrlar brosnachaidh do dhaoine ag ionnsachadh 's a' cleachdadh na Gàidhlig, daoine òga san dachaigh agus san sgoil agus inbhidh sa choimhearsnachd.

Sa phlana seo, tha sinn a' comharrachadh na h-ath chuairt den Sgrùdadh Buaidh Eaconamach, dàimh ùr le Oilthigh Ghlaschu gus ceanglaichean a leasachadh le cànan agus na h-ealain – tro sgrùdadh cùise san amharc air Ceol 's Craic thar trì bliadhna, agus sreath de dh'òraidean gus a dhèanamh comasach do sgoilearan, luchd-turais, luchd-frithealaidh agus pàrantan barrachd a thuigsinn mu àite na Gàidhlig an taobh a-staigh àrainneachd fharsaing eachdraidheil cànanach is cultarach na h-Alba.

Ann an liubhairt Ro-Innleachd Ealain Ghàidhlig 2011 – 2014, tha sinn dealasach a thaobh dòigh-obrach in-ghabhalach, sam bi Glaschu Beò fosgarra is sùbailte, a' briseadh sìos cnapan-starra co-cheangailte ri cumail a-mach, a' gabhail a-steach a bhith a' tuigsinn gum faod a' Ghàidhlig fhèin a bhith na cnap-starra. Dèiligidh sinn le feumalachdan na coimhearsnachd ealanta agus aig an aon àm bidh sinn a' dèanamh leasachadh a thaobh luchd-frithealaidh ùr airson gnìomhachdan ùra ealain, agus a' gineadh ùidh às ùr sa Ghàidhlig leis an luchd-frithealaidh a th' ann.



## 5. Research\*

As part of the first Gaelic Arts Strategy 2006-09 Glasgow Life, with partner organisations, assumed a new agenda of research, historical and cultural exploration...to enable a greater understanding of Gaelic identity. This was achieved through Audience Development Research and Strategy (2007) and Economic Impact Study of Gaelic Arts to Glasgow (2009).<sup>4</sup>

The new Gaelic Arts Strategy embraces these sentiments and would like to further enhance the importance of research in Gaelic Arts. This is especially true in the need to link the importance of the arts with language acquisition. The arts provide opportunities for the socialisation of the language, an informal access point across a spectrum of learning and a platform for inspiration for people learning and using Gaelic, young people in the home and at school and adults in the community.

In this plan we identify the next phase of the Economic Impact Study, a new relationship with University of Glasgow to develop links with language and the arts - through a proposed three year case study of Ceòl 's Craic and a series of lectures to enable pupils, tourists, audiences and parents to understand more about the place of Gaelic within Scotland's wider historical linguistic and cultural environment.

In delivering the 2011 – 2014 Gaelic Arts Strategy, we are committed to an inclusive approach, in which Glasgow Life will be open and flexible, breaking down barriers of exclusion, including recognising that Gaelic itself can be the barrier. We will address the needs of the artistic community while at the same time developing a new audience for new arts activities and generating a renewed interest in Gaelic for our existing audience.

<sup>4</sup> Chlamers, D, Danson, M The Economic Impact of Gaelic Arts and Culture in Glasgow, February 2009

\* For details on each theme please see attached Table of Recommendations

Tha Plana nan Ealan Ghàidhlig 2011-2014 taingeil airson nan com-pàirteachasan ùra agus ath-ùraichte le taic bho:

Gaelic Arts Plan 2011-2014 acknowledges new and renewed partnerships with the support of the following partners:

GLASGOW  
INTERNATIONAL  
FESTIVAL OF  
VISUAL ART



Leabhar  
's Craic  
Widhann 'the book and the  
book banth and among 'the



Ceòl 's Craic  
music and banter



an  
Lòchran

CCA:



[ NATIONAL  
THEATRE  
OF SCOTLAND ]

Comairt  
Ghàidhlig  
Ghàidhlig



Celtic CONNECTIONS



Royal Scottish Academy  
of Music and Drama

TRONGATE 103