

Gallery Guide

Welcome to the People's Palace and Winter Gardens. Here at Glasgow's social history museum, you'll learn about the story of the people and city from 1750 to the end of the 20th century. The thematic displays give a wonderful insight into how Glaswegians lived, worked and played in years gone by.



Visit the Single End display to find out how poor Glasgow families of the 1930s struggled to make ends meet in the cramped and uncomfortable conditions of a one-room tenement flat. Find out about the birth of the trades union movement and the

struggles of the working class in the city. Don't miss the 'must-see' objects highlighted on this floor plan.

At the People's Palace there's always something to do, with a daily programme of events ranging from workshops to talks and tours. A regular programme of temporary exhibitions explores aspects of Glasgow's social history. For details visit the Information Desk in the main foyer or ask one of the staff.

Don't forget to visit the museum shop or take a break in the Winter Gardens where you can wander among the exotic plants or enjoy a coffee or lunch at the café. You may also want to visit Glasgow Green, one of the oldest public spaces in Glasgow.



For more information about the People's Palace and Winter Gardens or any of Glasgow Museums' 12 venues, please visit our website at www.glasgowmuseums.com. Entry to the People's Palace has always been free. Donations at the donation box in the main foyer are welcome.

If you have any queries during your visit please ask at the Information Desk or ask any of our Visitor Assistants in the galleries.

We hope you enjoy your visit and look forward to seeing you again.

Visiting the People's Palace

Monday to Thursday and Saturday
10am to 5pm, Friday and Sunday
11am to 5pm.

By subway

Fifteen minutes' walk from St Enoch Subway station.

By rail

Fifteen minutes' walk from Argyle Street, Bellgrove and High Street rail stations.

By bus

First Bus services **16, 18, 40, 61, 62, 64,** and **263** all stop near Glasgow Green.

Facilities:

Free guided tours, gallery shop, café, male and female toilets, wheelchair access, free parking.

floor plan



Plans and visitor information

www.glasgowmuseums.com

Glasgow Green | Glasgow, G40 1AT | Phone 0141 276 0788 |
Fax 0141 276 0787 | Text phone 0141 276 0795 |

Culture & Sport



FREE

Welcome Bienvenue Willkommen Bienvenido Benevenuti
www.glasgowmuseums.com

Don't Miss

Things you must see at People's Palace and Winter Gardens



1 Delft Field Punch Bowl



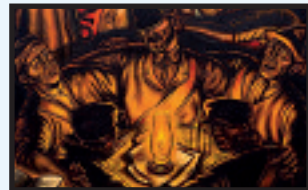
2 Private Jean Riley's Story



3 The Buttercup Dairy



4 Billy Connolly's Banana Boots



5 Ken Currie Paintings



6 The Single End

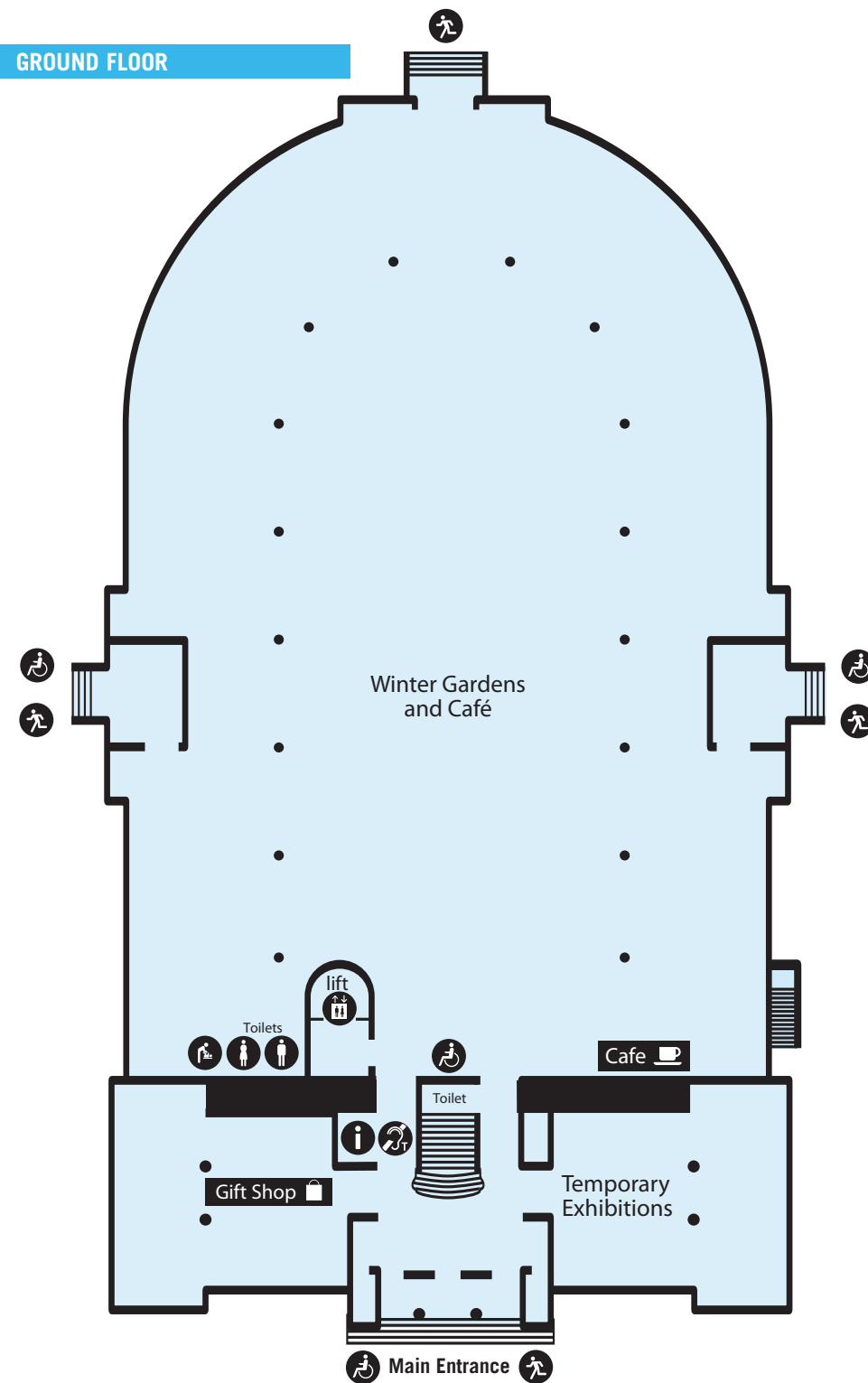
Facilities

- Enquiry Desk
- Disabled Access / Toilets
- Hearing system
- Baby changing
- Shop
- Emergency Exit
- Ladies Toilets
- Restaurant / Cafe
- Lifts
- Gents Toilets

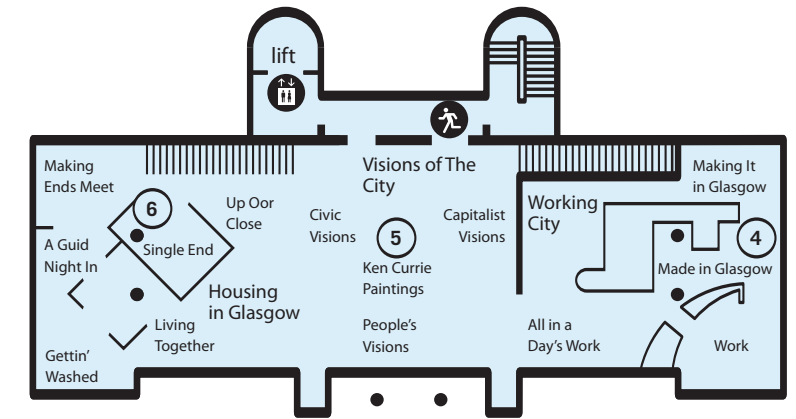
Gallery Rules

- Please do not touch the objects on display.
- Food and drink may not be taken into the galleries, and smoking is not permitted anywhere in this building.
- You may take photographs for personal use only. Please contact Glasgow Museums Photo Library on 0141 287 2595 regarding photography for commercial purposes, or to order prints or photographs.
- When using a mobile phone, please have consideration for other visitors.
- Glasgow Museums staff have the right to work in a safe environment free from violence and threatening behaviour. The police may be asked to prosecute any visitor acting in a violent or abusive way.

GROUND FLOOR



SECOND FLOOR



FIRST FLOOR

