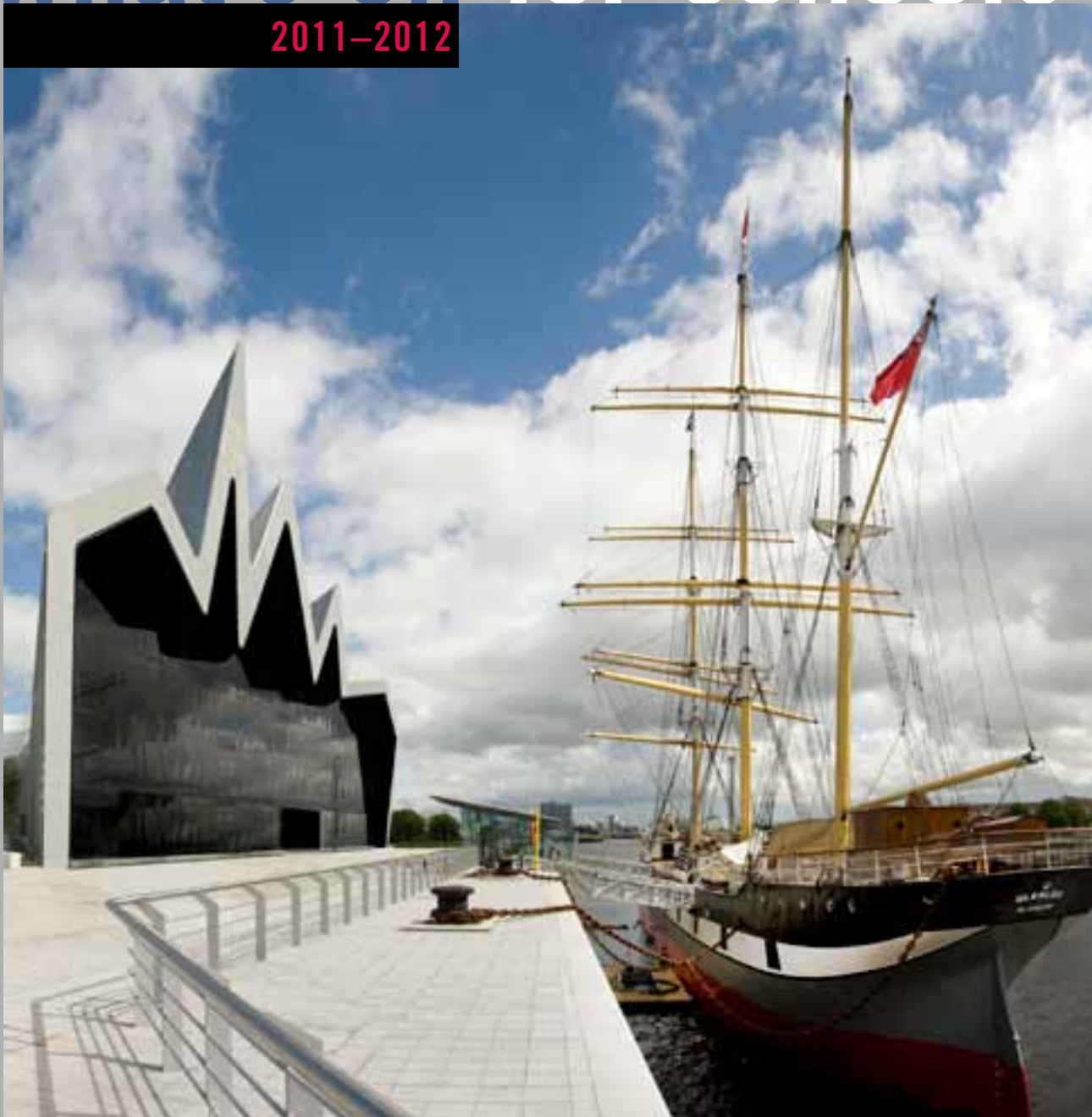


what's on for schools

2011-2012



THE BURRELL COLLECTION

The Burrell Collection is full of beautiful objects and provides an inspiring environment for creativity and learning. Pupils can discover treasures from China and Ancient Egypt, Islamic and Christian art, textiles and armour, and paintings by major European artists.

GALLERY OF MODERN ART (GoMA)

GoMA is a vibrant and exciting modern-art gallery and an inspiring environment for young people. It offers thought-provoking displays of paintings, sculptures, prints and installations. As these change frequently, the workshops for schools are continually updated.

GLASGOW MUSEUMS RESOURCE CENTRE (GMRC)

Glasgow Museums Resource Centre is a purpose-built museum storage facility and visitor centre in the south of Glasgow. Pupils can explore the stores and take a close-up look at objects ranging from natural history specimens to paintings and arms and armour.

KELVINGROVE ART GALLERY AND MUSEUM

There are exciting and diverse exhibits and displays awaiting secondary-school pupils at Kelvingrove – from French Art to Scotland's Wildlife to the Conflict and Consequence gallery. Facilities for schools include interactive Discovery Centres, an education suite, a packed-lunch area and shops.

RIVERSIDE MUSEUM

The Riverside Museum opened in June 2011. This exciting new venue for our transport collections is located where the River Kelvin meets the Clyde, and the Tall Ship *Glenlee* has been moored outside. The museum displays include recreations of Glasgow streets in past eras.

PEOPLE'S PALACE AND WINTER GARDENS

The collections at the People's Palace bring to life the history of the city and people of Glasgow from 1750 to the present. They explore themes such as industrialisation, work, home life and leisure. The adjoining Winter Gardens houses plants from all over the world.

PROVAND'S LORDSHIP

A visit to Provand's Lordship is a step back in time to Glasgow's medieval past. Built over 500 years ago, Provand's Lordship is the oldest house in Glasgow and has a historical connection with the nearby Glasgow Cathedral. It displays a collection of Scottish furniture.

ST MUNGO MUSEUM OF RELIGIOUS LIFE AND ART

This award-winning museum aims to promote respect and understanding between people of different faiths and of none. The museum is an exciting resource which encourages young people to engage with world faiths and contemporary issues affecting society today.

SCOTLAND STREET SCHOOL MUSEUM

Charles Rennie Mackintosh, Glasgow's most celebrated architect, designed Scotland Street School between 1903 and 1906. The school is now a museum that tells the story of education in Scotland from 1872 to the late twentieth century, and also has a varied temporary exhibition programme.

www.glasgowmuseums.com

Image on front cover: The newly opened Riverside Museum and the Tall Ship *Glenlee*.

Education at Glasgow Museums

SECONDARY | ASL

Welcome to the 2011–2012 programme

This promises to be a rewarding year for schools at Glasgow Museums. The Riverside Museum – the exciting new venue for our transport collections – has now opened to much critical acclaim. We will be piloting new workshops there in the first part of the session – these will be FREE for all schools until Christmas.

The Curriculum for Excellence advocates learning in a variety of environments, so if you have not visited before why not give us a try? Glasgow Museums' workshops provide ideal opportunities for interdisciplinary learning.

You will notice that the pages for the Gallery of Modern Art (GoMA) look a bit different from the others. This is because we want to highlight the skills that can be developed through GoMA workshops. All of the sessions can be adapted for the level of your class.

If you have any special requests, please get in touch and we will do our best to meet them. For further information or to book a workshop, please phone 0141 276 9505/6.

Continuing Professional Development

CPD for secondary-school teachers will be offered this year. Keep an eye on our website www.glasgowmuseums.com/learning for up-to-date information or contact Anne Wallace by emailing anne.wallace@glasgowlife.org.uk.

All of our workshops can be adapted for ASL (Additional Support for Learning) – just give us a call to discuss your needs. Workshops are FREE for ASL schools.

No shows!

Glasgow Museums will charge schools the full amount for a booked workshop if they fail to attend without cancelling. If you can't make it, let us know by phoning 0141 276 9505/6 up to an hour before the workshop is due to begin and there will be no charge.

Contents

Art and Design	2
Drama	10
English	10
History	12
Religious and Moral Education, Citizenship, Modern Studies	16

ASL AND BSL AT GLASGOW MUSEUMS

Most workshops at all of our venues can be adapted for ASL, and workshops at the Gallery of Modern Art (GoMA) and the People's Palace and Winter Gardens can be adapted for BSL (British Sign Language).

The workshops described in *What's On for Schools 2011–2012: Pre-5s, Primary, ASL* can be made available to secondary-school classes.

Workshops are FREE for ASL schools.

THE BURRELL COLLECTION

Pollok Country Park
2060 Pollokshaws Road
Glasgow G43 1AT

CHINESE CERAMICS

Third Level, Secondary 1–3

Per class: £31 for Glasgow schools, £36 for schools outside Glasgow

Pupils will look at wonderful Chinese ceramics, learn about their history and draw some of the objects. Then, taking inspiration from the collection, they will also make a ceramic piece to take away (to be fired and glazed back at school).

TEXTILES: BACK TO BASICS

Third Level, Secondary 1–3

Per class: £31 for Glasgow schools, £36 for schools outside Glasgow

In this session learners will delve deep into the world of fabrics and textiles. They will discover how 15th-century tapestries were made and explore the intricacies of 17th-century embroidery. They can then try their hand at one of three practical activities: weaving, embroidery or felt making (please state your preference when booking).

IMPRESSIONISM – A CRITICAL STUDY

Senior Phase, Secondary 4–6

Per class: £31 for Glasgow schools, £36 for schools outside Glasgow

This session provides an opportunity for young people to apply a critical approach to Impressionist art, analyse different artworks and express their opinions. They will use visual literacy skills and learn ways of discussing art, and then focus on Degas's figure composition.

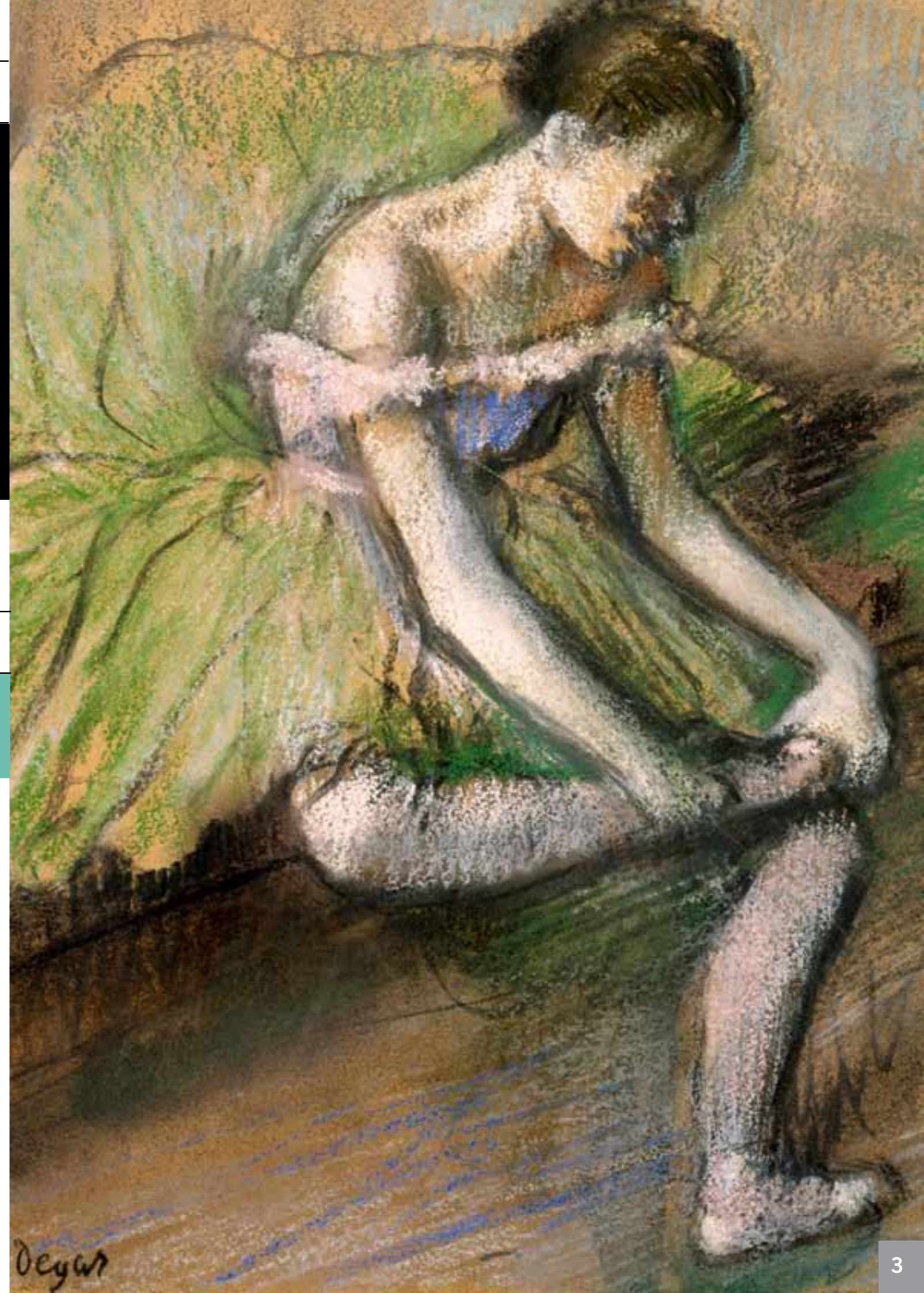


Image right: *La Jupe Verte (The Green Dress)*, one of the works by Edgar Degas that pupils will examine during the workshop *Impressionism – A Critical Study*.

GALLERY OF MODERN ART (GoMA)

Royal Exchange Square
Glasgow
G1 3AH

I see, I think, I wonder ...

The Gallery of Modern Art (GoMA) uses its collections, exhibitions and learning programmes to inspire vibrant conversations about the art of our time.

All school workshops for 2011–12 will explore exhibitions of sculpture, drawings, collages and prints.

Every workshop will:

- Explore works of art
- Be run at a time suitable for each group
- Be tailored to age, ASL and language needs
- Include time in the gallery and studio
- Incorporate an interactive tour and discussion
- Offer exciting practical activities
- Involve peer discussion and critical feedback
- Conclude with reflection on learning outcomes.

In 2011–12 exhibitions at GoMA will include:

Alasdair Gray: City Recorder, 27 August 2011–spring 2012: drawings, collages and prints by the influential Glasgow artist Alasdair Gray.

You, Me, Something Else, 16 September 2011–8 March 2012: an exhibition of sculpture by local contemporary artists.

Teachers are welcome to bring a camera to all GoMA workshops to record pupils' work and activities.

DRAWING

Third Level and Senior Phase, Secondary 1–6

Full-day session per class: £62 for Glasgow schools, £72 for schools outside Glasgow

Half-day session per class: £31 for Glasgow schools, £36 for schools outside Glasgow

NEW!

Using observational and expressive techniques, pupils will learn to record elements such as scale, form, shape and texture from artworks in our galleries.

PORTRAITS

Third Level and Senior Phase, Secondary 1–6

Full-day session per class: £62 for Glasgow schools, £72 for schools outside Glasgow

Half-day session per class: £31 for Glasgow schools, £36 for schools outside Glasgow

NEW!

This workshop explores how modern artists approach portraiture. Learners will research, explore and record processes, materials and techniques.

SCULPTURES

Third Level and Senior Phase, Secondary 1–6

Full-day session per class: £62 for Glasgow schools, £72 for schools outside Glasgow

Half-day session per class: £31 for Glasgow schools, £36 for schools outside Glasgow

NEW!

This workshop explores how artists experiment with scale, material, form and space. Learners will be encouraged to problem solve and create and construct their own work.

Image right: *Strive to Set the Crooked Straight* by James McLardy (photo © Neil Smallbone): one of the artworks learners will examine in GoMA's new *Sculptures* workshop.



GLASGOW MUSEUMS RESOURCE CENTRE (GMRC)

200 Woodhead Road
Nitshill
Glasgow G53 7NN

CLARICE CLIFF AND ART DECO DESIGN

Third Level, Secondary 1–3

Per class: £31 for Glasgow schools,
£36 for schools outside Glasgow

NEW!

Clarice Cliff's distinctive ceramic designs are synonymous with Art Deco. In this workshop pupils will discover the inspiration, techniques and processes behind her unparalleled success as a female designer. They will also handle Clarice Cliff pieces and take part in sketching activities and a creative clay session.

KELVINGROVE ART GALLERY AND MUSEUM

Argyle Street
Glasgow
G3 8AG

THEMED TOURS

Senior Phase, Secondary 4–6

Per class: £31 for Glasgow schools, £36 for schools outside Glasgow

60-minute sessions

These tours will show learners works by important European artists and encourage discussions about art.

The following themes are available:

Life in France • Religion and Art: The Italian Renaissance to Salvador Dali
• Sculpture: Rodin to Ian Hamilton Finlay.

When booking please specify your choice of subject.

TEMPORARY EXHIBITION

MASTERS OF ART: 500 YEARS OF ITALIAN ART IN GLASGOW MUSEUMS

Spring–autumn 2012

ARTISTS' SECRETS

Senior Phase, Secondary 4–6

April–August 2012

NEW!

In this session pupils will be given a gallery-based introduction to the prestigious Italian art collection displayed in the temporary exhibition *Masters of Art*. They will try out techniques used by artists for making their own paint and learn about the development of perspective and ideas about composition.

CRITICAL JOURNEYS

Senior Phase, Secondary 4–6

Per class: £31 for Glasgow schools, £36 for schools outside Glasgow

90-minute sessions

With one of the finest civic collections in Europe, Kelvingrove is an ideal place to begin an introduction to key art movements and subject matters. Our *Critical Journeys* workshops introduce young people to art terminology and techniques for critiquing artworks, and will assist pupils with examination preparation.

Select from the following subjects:

Figure composition • French Impressionists • Glasgow Boys • Natural environment
• Portraiture • Still life.

When booking please specify your choice of subject.

Image right: The Archangel Michael and the Rebel Angels by Giuseppe Cesari (known as Cavalier d'Arpino), one of the works included in the exhibition Masters of Art: 500 years of Italian Art in Glasgow Museums.



KELVINGROVE ART GALLERY AND MUSEUM **cont.**

PRACTICAL ART SESSION

Senior Phase, Secondary 4–6

Full-day session

Per class: £62 for Glasgow schools, £72 for schools outside Glasgow

Pupils will experiment with preparatory sketching in the galleries using a variety of materials. This is followed by a session that focuses on a set subject matter, when they will create individual artworks using acrylic paints.

Please select from the following subjects:

Portraiture

Still life

PRACTICAL DESIGN STUDY DAY

Senior Phase, Secondary 4–6

Full-day session

Per class: £62 for Glasgow schools, £72 for schools outside Glasgow

Pupils will be given a gallery-based introduction to the varied collections at Kelvingrove, tailored to suit their individual design briefs, and access to handling objects not on display to the general public. The workshop will include research through preparatory sketching and experimentation with drawing styles and materials. An experienced member of staff will be available to help pupils with portfolio development.

STEVEN CAMPBELL MASTERCLASS (PORTRAITURE / LIFE DRAWING)

Senior Phase, Secondary 5–6

FREE for all schools

2 and 3 November 2010, 10am–4pm

In partnership with the Steven Campbell Trust, Kelvingrove Art Gallery and Museum is offering a two-day masterclass led by artist Claire Paterson, winner of the inaugural prize for the Trust. Participants must attend on both days. Early booking is advised because spaces are limited.

RIVERSIDE MUSEUM

100 Pointhouse Place
Glasgow
G3 8RS

THINK DESIGN

Senior Phase, Secondary 4–6

Until December 2011 – Pilot workshop: FREE for all schools

From January 2012 – Per class: £31 for Glasgow Schools, £36 for schools outside Glasgow

NEW!

This dynamic design-related workshop looks at a number of influential and iconic vehicles. Working in teams to apply critical thinking skills, learners will evaluate changing priorities in transport development and design. The workshop touches on ergonomics and alternative energy sources.

Image right: A senior pupil at the 2010 Steven Campbell Trust life-drawing masterclass at Kelvingrove Art Gallery and Museum



PEOPLE'S PALACE AND WINTER GARDENS

Glasgow Green
Glasgow
G40 1AT

MEN SHOULD WEEP

Senior Phase, Secondary 4–6

Maximum class size: 20

Per class: £31 for Glasgow schools, £36 for schools outside Glasgow

To help learners prepare for performances of the play *Men Should Weep*, we will take them on a tour of the People's Palace to find out about life in 1930s' Glasgow.

THE STEAMIE

Senior Phase, Secondary 4–6

Maximum class size: 20

Per class: £31 for Glasgow schools, £36 for schools outside Glasgow

This workshop is ideal for pupils studying *The Steamie*. It includes a tour of the People's Palace that focuses on life in the 1950s and provides an opportunity to take part in a traditional clothes-washing session, complete with washboard and wringer.

GLASGOW MUSEUMS RESOURCE CENTRE (GMRC)

200 Woodhead Road
Nitshill
Glasgow G53 7NN

SHAKESPEARE: BEHIND THE SCENES

Senior Phase, Secondary 4–6

Per class: £31 for Glasgow schools, £36 for schools outside Glasgow

In this innovative workshop, we will look at objects in Glasgow Museums' collections – such as arms and armour, ceramics and paintings – that relate to Shakespeare's plays, and which will help learners gain insight into the lives and societies he depicts.



Image right: In the *Shakespeare: Behind the Scenes* workshop at GMRC pupils will handle historic weapons and then find out about 16-century fighting techniques.

PEOPLE'S PALACE AND WINTER GARDENS

Glasgow Green
Glasgow
G40 1AT

SUFFRAGETTES – VOTES FOR WOMEN!

Third Level, Secondary 1–3

Maximum class size: 20

Per class: £88 for all schools

In this actress-led session, pupils will meet Isabella Donald – an active Glasgow suffragette. They will listen to her passionate speech, witness a protest outside Duke Street Prison, discuss the role of women in promoting equal rights and join Isabella on a campaign rally.

HIDDEN LEGACIES – FROM SLAVE TRADE TO FAIR TRADE

Senior Phase, Secondary 4–6

Maximum class size: 20

Per class: £31 for Glasgow schools, £36 for schools outside Glasgow

This challenging session explores Glasgow's connection with the slave trade and what we can do to tackle modern forms of slavery. Pupils will be encouraged to develop critical-thinking skills through discussion and group work, and will have the opportunity to handle original and replica objects connected with this theme.

PROVAND'S LORDSHIP

3 Castle Street
Glasgow
G4 0RB

INTRODUCTORY TOURS

Third Level and Senior Phase, Secondary 1–6

Per class: £31 for Glasgow schools, £36 for schools outside Glasgow

Has your class visited Provand's Lordship? On our introductory tour learners will find out how residents of Provand's Lordship lived long ago, and reflect on how Glasgow expanded to become a major industrial city.

SELF-LED VISITS

Third Level and Senior Phase, Secondary 1–6

FREE for all schools

If you would like to bring a class on a self-led visit, please book in advance by phoning 0141 276 9505/6. However, due to the nature of the building we recommend facilitated visits.

Due to the historic nature of Provand's Lordship, access to the upper floors is by staircase only. To discuss how we can facilitate your visit, please phone the Museums Education Service on 0141 276 9505/6.

Unfortunately, due to the layout of the house, it is not possible to eat packed lunches inside Provand's Lordship. However, there is a semi-sheltered area with seating in the garden that you are welcome to use. Indoor space may be available at the nearby St Mungo Museum of Religious Life and Art, but this is limited so please contact us in advance to discuss – phone 0141 276 9505/6.



Image right: The Suffragettes – Votes for Women! workshop at the People's Palace brings to life the campaign for women's suffrage.

GLASGOW NECROPOLIS

www.glasgownecropolis.org

TOURS

FREE for all schools

By arrangement – please email tours@glasgownecropolis.org

The Friends of Glasgow Necropolis offer informative tours of Glasgow Necropolis, just behind St Mungo Museum, which can be tailored for schools. From these, pupils can learn a great deal about Glasgow's history, such as about the importance of industrialists in the past. They also offer PowerPoint presentations about the Necropolis to schools.

Medieval Glasgow

History display and DVD resource

FREE to borrow for use in school

This informative resource tells the story of Glasgow's medieval past. It looks at how Glasgow was founded in the sixth century, and how it grew from a small settlement into a thriving and complex city. Subjects include the role of the Church, Glasgow's castles, trade, and what it was like to live and work in medieval Glasgow.

The resource consists of a 10-minute film on DVD and 10 pull-up banners with text and illustrations. Equipment to play the film is also available. The banners are written by Glasgow Museums' Scottish History curator, and the film features Ted Cowan (Professor of Scottish History, University of Glasgow), Stephen Driscoll (Professor of Historical Archaeology, University of Glasgow) and Hugh McBrien (Senior Archaeologist, West of Scotland Archaeology Service).

To find out more, phone Glasgow Museums Resource Centre on 0141 276 9300.

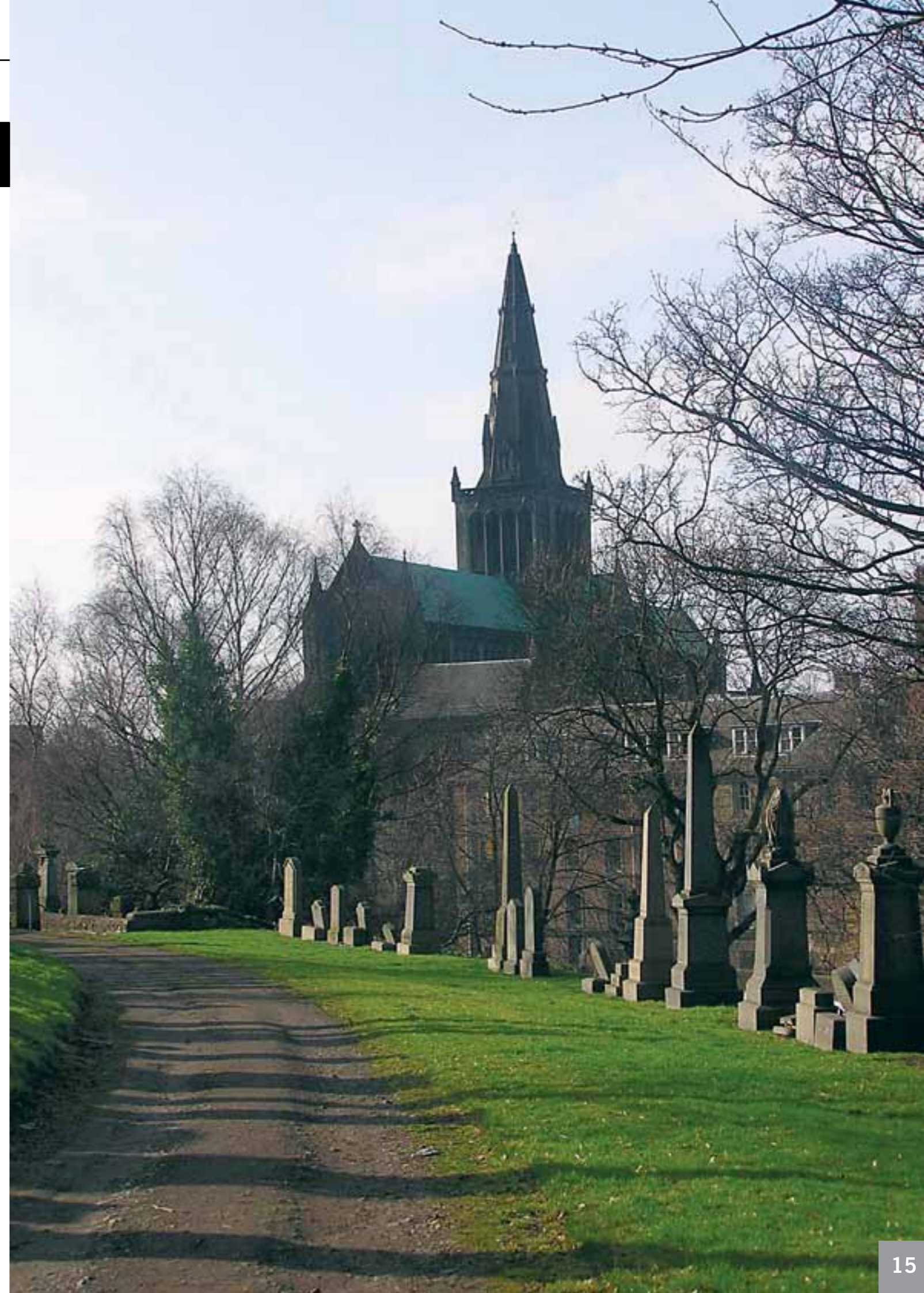


Image right: Glasgow Necropolis, behind Glasgow Cathedral: free tours are offered by the Friends of Glasgow Necropolis – see above.

KELVINGROVE ART GALLERY AND MUSEUM

Argyle Street
Glasgow
G3 8AG

THE CENTRE OF NEW ENLIGHTENMENT (TCoNE)

Third Level and Senior Phase: Secondary 1–6

FREE

TCoNE delivers a cornerstone objective of the Curriculum for Excellence: to enable young people to become confident individuals. TCoNE is a high-tech interactive tour of Kelvingrove and its collections. In pairs, young people will explore the galleries, collaborating and co-operating with one another to complete challenges and become self-assured.

WHAT IS 'SCOTTISH'?

Third Level, Secondary 1–3

Per class: £31 for Glasgow schools, £36 for schools outside Glasgow

In this session, which has an emphasis on pupils gathering information and discussing their ideas in groups, we will use museum objects and art to explore past and present concepts of Scotland's identity.

Recommended in conjunction with a visit to the Centre of New Enlightenment (TCoNE).

PEOPLE'S PALACE AND WINTER GARDENS

Glasgow Green
Glasgow
G40 1AT

HIDDEN LEGACIES – FROM SLAVE TRADE TO FAIR TRADE

Third Level, Secondary 1–3

Maximum class size: 20

Per class: £31 for Glasgow schools, £36 for schools outside Glasgow

This challenging session explores Glasgow's connection with the slave trade and what we can do to tackle modern forms of slavery. Pupils will be encouraged to develop critical-thinking skills through discussion and group work, and will have the opportunity to handle original and replica objects connected with this theme.

NOT IN MY NAME!

Senior Phase, Secondary 4–6

Maximum class size: 20

Per class: £31 for Glasgow schools, £36 for schools outside Glasgow

Glasgow has a strong history of campaigning for social change at a local, national and international level – from trade union activism to promoting women's rights to protesting against apartheid. Pupils will learn about political campaigns, engage in a discussion about the role of campaigns and have the chance to create their own. They will be asked, 'Can one person really make a difference?'.



Image right: In the *What is Scottish?* workshop at Kelvingrove pupils find out that the kilt can be a multi-purpose garment.

ST MUNGO MUSEUM OF RELIGIOUS LIFE AND ART

2 Castle Street
Glasgow
G4 0RH

BIGOT BUSTERS! TACKLING SECTARIANISM

Third Level and Senior Phase, Secondary 1–6

Per class: £31 for Glasgow schools, £36 for schools outside Glasgow

Q: What sometimes happens when you mix religion, football and politics together with intolerance?

A: Sectarianism!

Learners will explore the problem of sectarianism in Glasgow and ways to tackle it.

INTRODUCTORY TOURS

Third Level and Senior Phase, Secondary 1–6

FREE for all schools

Free tours led by Learning & Access staff are available throughout the year. These can be general or focused on particular themes in the collection or in temporary exhibitions.



Image right: Shiva as Nataraja, or 'Lord of the Dance' – a bronze sculpture on display at St Mungo Museum of Religious Life and Art.

The Burrell Collection

Gallery of Modern Art (GoMA)

Glasgow Museums Resource Centre (GMRC)

Kelvingrove Art Gallery and Museum

Riverside Museum

People's Palace and Winter Gardens

Provand's Lordship

St Mungo Museum of Religious Life and Art

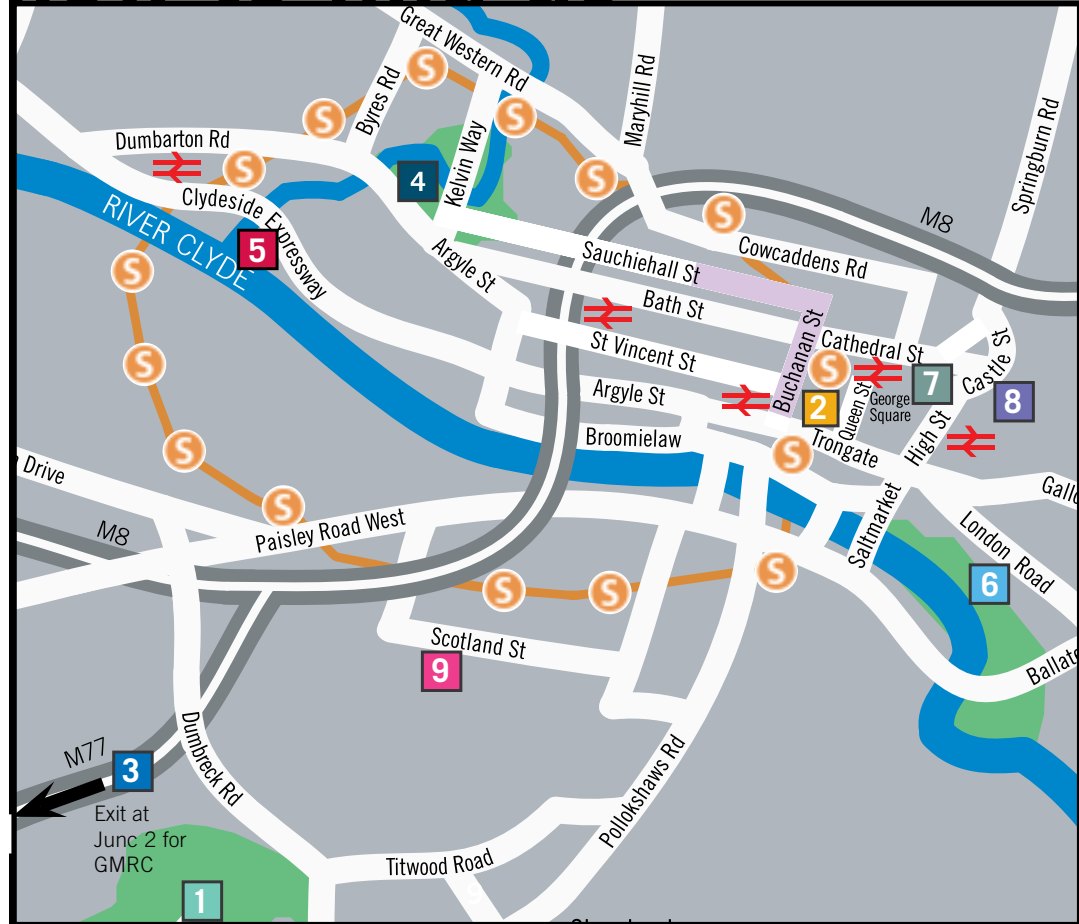
Scotland Street School Museum

www.glasgowmuseums.com

Image right: Pupils from St Paul's High school attend specially arranged weekly archaeology workshops at GMRC. If you are interested in similar sessions for your school – related to archaeology or other subjects – please phone 0141 276 9505/6.



how to find us



1 THE BURRELL COLLECTION

Pollok Country Park, 2060 Pollokshaws Road,
Glasgow G43 1AT

2 GALLERY OF MODERN ART (GoMA)

Royal Exchange Square,
Glasgow G1 3AH

3 GLASGOW MUSEUMS RESOURCE CENTRE (GMRC)

200 Woodhead Road, Nitshill,
Glasgow G53 7NN

4 KELVINGROVE ART GALLERY AND MUSEUM

Argyle Street,
Glasgow G3 8AG

5 RIVERSIDE MUSEUM

100 Pointhouse Place
Glasgow
G3 8RS

6 PEOPLE'S PALACE AND WINTER GARDENS

Glasgow Green,
Glasgow G40 1AT

7 PROVAND'S LORDSHIP

3 Castle Street,
Glasgow G4 0RB

8 ST MUNGO MUSEUM OF RELIGIOUS LIFE AND ART

2 Castle Street,
Glasgow G4 0RH

9 SCOTLAND STREET SCHOOL MUSEUM

225 Scotland Street,
Glasgow G5 8QB