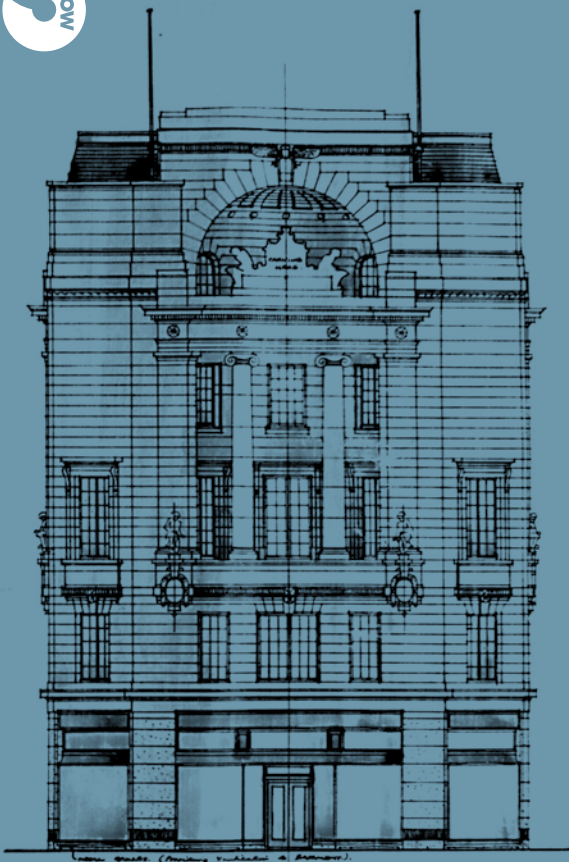


your archives / your history / your stories
Discover the fascinating stories of Glasgow and its people.



glasgow's archives

Architectural Plans: The wonderful documentary heritage of Glasgow's buildings over the last three centuries.

Searchroom Opening Hours

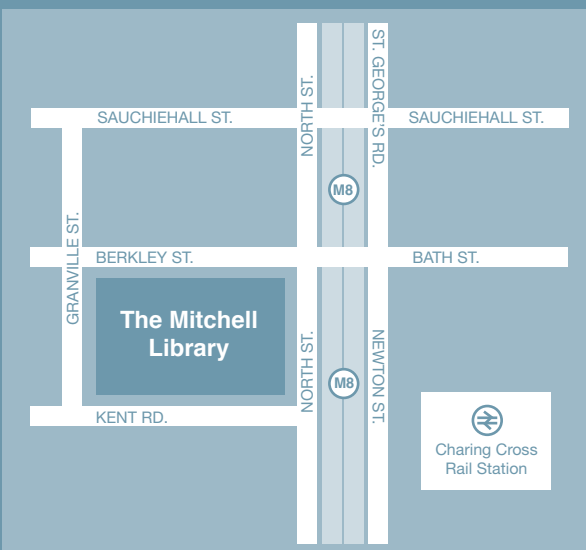
Mon / Wed / Thu / Fri	9am-5pm
Tue	9am-8pm
Sat	By prior arrangement

Document Productions

Mon / Wed / Thu / Fri	9am-1pm, 2pm-4pm
Tue	9am-1pm, 2pm-7pm

Please check to confirm about Tuesday evening productions.

How to find us:



Archives and Special Collections

The Mitchell Library
North Street
Glasgow G3 7DN

T: 0141-287 2910
F: 0141-226 8452
E: archives@glasgowlife.org.uk

www.glasgowlife.org.uk/archives

services

There are large databases for our architectural plans, in particular in respect of building control applications. Those who wish to view plans after 1995 will need a reference number, which may be obtained from 'Building Control'. The duty archivist will advise users and point you towards the records, which are most relevant to your enquiries. There is a production fee for commercial use of the building control plans. Photocopies of documents can be supplied and plan copying, subject to copyright, is available from the Archives at commercial rates.

preservation of historical documents

The Archives exist to preserve and give access to the historical records of Glasgow. We are always keen to accept further gifts and deposits (on long-term loan) of records of historical significance, which will help us understand the ordinary and extraordinary people and events, which helped shape the history of Glasgow



the archives

Architectural Plans

The Archives contain more than 150,000 sets of architectural drawings from various sources, and the most important of these are the plans submitted to the various building control authorities.

Building Control Plans

Since the 1860s there has been a legal requirement in Glasgow to deposit plans originally with the Dean of Guild Court of any proposed erection or alteration of a building within the city boundaries. There were similar requirements in the neighbouring burghs. In the county areas, outwith the burghs, this developed around 1900 or later. The surviving plans are held in the Archives. The crown and a few bodies such as railway companies or Clyde Navigation Trust did not require to apply for permission, although in some cases they made courtesy submissions.

other architectural plans:

As well as building control plans, the Archives hold thousands of plans from other sources. These include the records of:

- local firms of architects, whose work was not necessarily confined to Glasgow
- the city's own Office of Public Works (mainly public buildings within the city)
- bodies such as the former Clyde Navigation Trust (docks and harbour facilities).

Glasgow City

Glasgow's building control plans date largely from 1885 which are housed in the Archives. There is a short gap from 1882-1887, when only microform copies of the plans survive. These are retained by Building Control.

The plans of many well-known buildings, including almost all the work of Charles Rennie Mackintosh in the city, were removed from the official record in the 1960s and are now in a separate collection.

For listed buildings there is additional information and all plans before 1910 for Glasgow and elsewhere have also been plotted on Ordnance Survey maps.

In addition to the plans, there are various early registers and other records of building control

applications, in particular folders of papers relating to each application (from 1964). These usually contain the original warrant permitting the work, and sometimes also a copy of the 'certificate of completion' recording that it had been carried out in accordance with the plans submitted.

Minor Warrants

From 1927 to 1975 there was a simplified procedure for very minor alterations. The plans for the minor warrants do not exist, but there are indexes, which are organised by the name of the proprietor at the time the work was undertaken.

Other areas

In the late 19th century Glasgow was surrounded by a group of suburban burghs, such as

Partick, Govan or Hillhead, which were gradually absorbed into the city by boundary extensions. Rutherglen was part of Glasgow from 1975 to 1996. The building control records for these burghs are in the Archives.

Other areas have come into the city as a result of boundary extensions, some of which have involved transfers of building control plans. These include the Yoker and Drumchapel area (1938) and Baillieston and other parts of Lanarkshire (1975).

building control plans

Glasgow: 1879, 1885-1981, 1989-

Govan: c.1870-1912

Hillhead: 1871-1891

Maryhill: 1876

Partick: 1873-1912

Pollokshaws: 1893-1912

Pollokshields East: 1880-1887

Rutherglen: 1872-1974

Lanarkshire (part): 1930-1975

