



Glasgow Museums Quiz Book



In March 2020, during the first Covid-19 lockdown, Glasgow Museums and the Weekday Wow Factor teamed up to offer themed quizzes with a focus on museum objects at the online discos and walks.

In 2022 we decided to celebrate the 2nd anniversary of this partnership by producing this quiz booklet.

The following questions have been drawn from some of our favourite quizzes over the last 2 years.

Question 1

Introducing Glasgow Museums



There are over a million objects in the Glasgow Museums collections. What percentage do you think are on display?

- 75%
- 25%
- 2%

“Miss Louise R Annand of the Education staff in Glasgow Art Galleries conducting teenagers in an art appreciation tour of the Galleries.” - Bill Tait of Partick Camera Club (1955).

From the Glasgow and Glasgow Museums quiz

Question 2



What event, held in 1888, helped to fund the building of Kelvingrove Art Gallery Museum?

"Art Galleries - from Bridge on Kelvin Way" - Frederick V Pessl from Partick Camera Club (1955).

Question 3

From the first quiz



"Gammel St"-
F Reminch of Partick
Camera Club (1955).

This picture shows a wedding tradition where neighbours turned out to see the bridal party leave the street. Money was thrown from the wedding car and children tried to pick up as much of it as they could.

What was this tradition called?

- A scrum
- A scramble
- A riot



An ostrich egg.

Which bird lays the largest egg?

- Cassowary
- Emu
- Ostrich

Question 5

From the Glasgow Murals quiz



Televisor receiving set disc model

This is one of the first commercially available televisions, the Baird Televisor Receiving Set (Disc Model 1930-32), which you can see at Glasgow Museums Resource Centre.

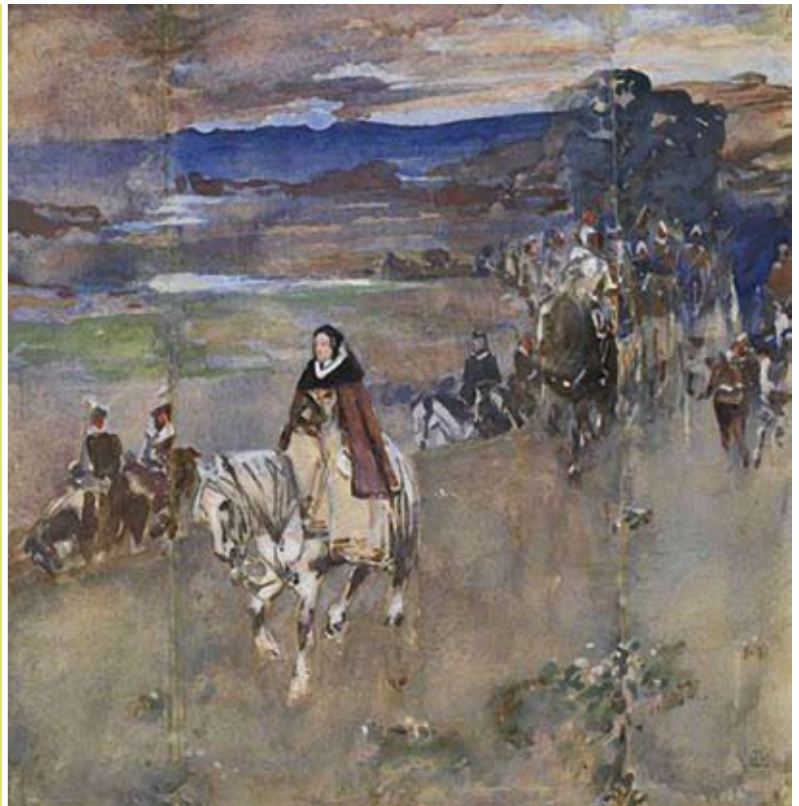
In what year did John Logie Baird first publicly demonstrate his television?

From the Taking Inspiration quiz

Question 6

Mary became Queen of Scots at 6 days old. Where was she born?

- Linlithgow Palace
- Edinburgh Castle
- Palace of Holyrood House



A watercolour by John Lavery titled *Night After the Battle of Langside*.

From the Christmas quiz (2021)

Question 7

These ideas for cake decorations were created by Isa Clark of Merrylee, Glasgow, who worked in the Shieldhall Co-op.

How else did Isa Clark use her skills?

- Car decoration
- Drawing cartoons
- Body paint



Question 8

From the India quiz



This Hindu sculpture showing the god Shiva as Nataraja (or Lord of the Dance) was bought specifically for display in the St Mungo Museum of Religious Life and Art. A month after the opening of the new museum something happened to the statue. What was it?

- It melted
- It was damaged
- It was stolen

From the Ireland quiz

Question 9

What is this bracelet made from?

- Plastic
- Bog oak
- Volcanic rock



From the Unusual Objects quiz

Question 10

These pieces of jewellery are made from something unusual. Can you guess what it is?



Question 11

From the Halloween quiz



This rat vase was presented to Dr John Brownlee, Physician-Superintendent, Belvidere Fever Hospital who, in 1900, quickly identified and contained an outbreak of..... in Glasgow.

What was the disease?

From the Nature quiz

Question 12

How many insects can a pipistrelle bat eat in a night (according to the Bat Conservation Trust)

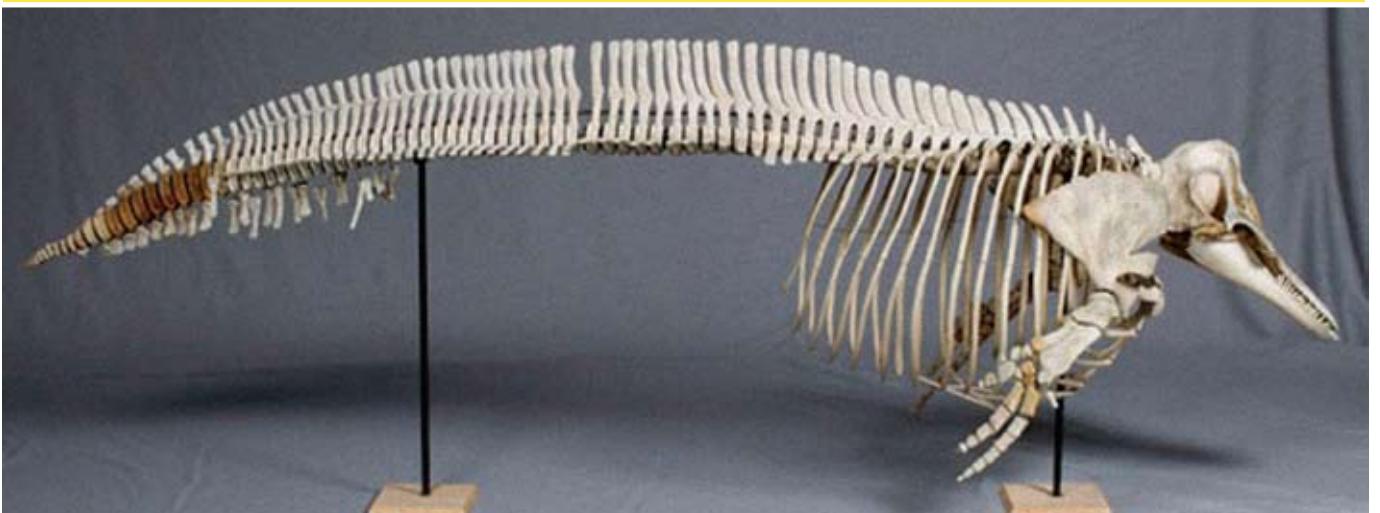
- 100
- 1,500
- Over 3,000



From the Unusual Objects quiz

Question 13

Guess the animal from the skeleton?



Question 14

From the Social History quiz



Photo by Andrew MacDonald of Partick Camera Club (1955).

What was the name of the (in)famous Glaswegian market which closed in 2009?



“While Glasgow Sleeps – Binmen” - Alf Daniel of Partick Camera Club (1955).

How much rubbish did residents of Glasgow throw away in 2019 (according to the Glasgow City Council’s Resources and Recycling Strategy 2020-30)

- 255,000 tonnes
- 200,000 tonnes
- 100,000 tonnes

Question 16

From the Volcanoes quiz



Fan- Francesco Petilli (circa 1790-1800).

Can you guess which volcano in southern Italy is shown on this fan (it famously erupted in 79AD destroying Pompeii and Herculaneum) ?



A View of Rome - Hendrick Verschuringh.

In this image of Rome you can see the Ponte Sant'Angelo, or Bridge of Angels with St Peter's Basilica in the distance. The round structure to the right is Castel Sant'Angelo.

Can you name the river shown in this painting?

- Tiber
- Trebbia
- Rubicon

Question 18

From the Japan quiz



This giant Japanese spider crab is the biggest invertebrate in the collection and also the biggest type of crab in the world.

How long do you think the front pair of pincers in a full-grown adult male can grow? (from claw to claw)

- 1m
- 2m
- Over 3m



Subway car- Hurst, Nelson & Company (1898)

Although some subway station names have changed, there is only one station to have permanently closed. It was near to the current Partick Station, which replaced it. What was it called?

- Gardner Street
- Merkland Street
- Dumbarton Road

Question 20

From the Christmas quiz (2020)



Illumination - Alexander Stuart Boyd

In what year did the 25th December become a bank holiday in Scotland?

- 1800
- 1930
- 1958



Barn owl

What are owl pellets?

- Things you feed to owls
- Indigestible food regurgitated by the owl
- Owl poo

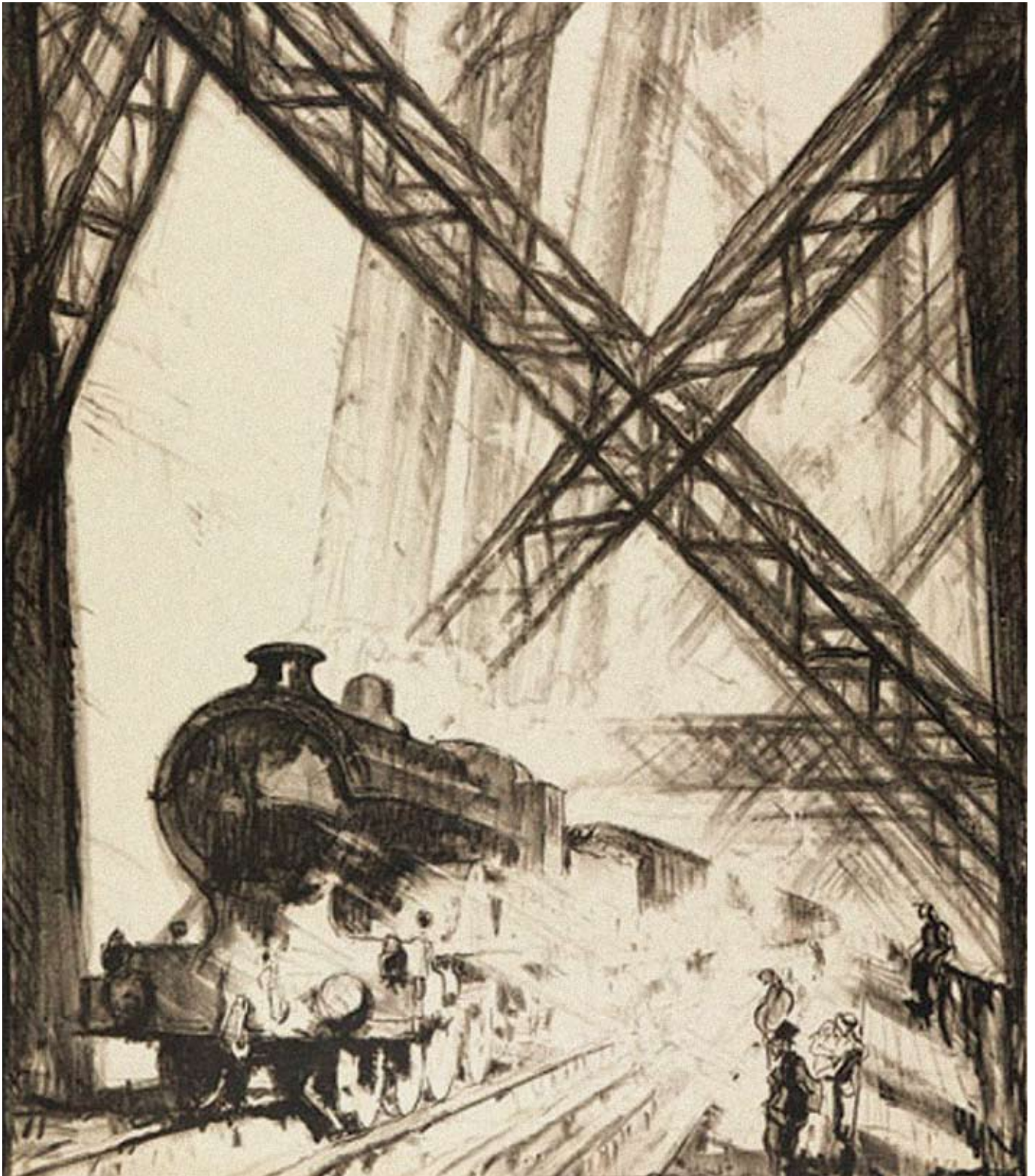
Question 22

From the Plants quiz



What do you think these beans were used for?

- To find out if someone was guilty of witchcraft or other crimes
- As an eye medicine
- For constipation
- For all of the above



What year did the Forth Bridge open?
• 1890 • 1900 • 1850

*The Forth Bridge:
L.N.E.R East Coast
Route - Frank
Brangwyn (1930).*

Question 24

From the People's Palace quiz

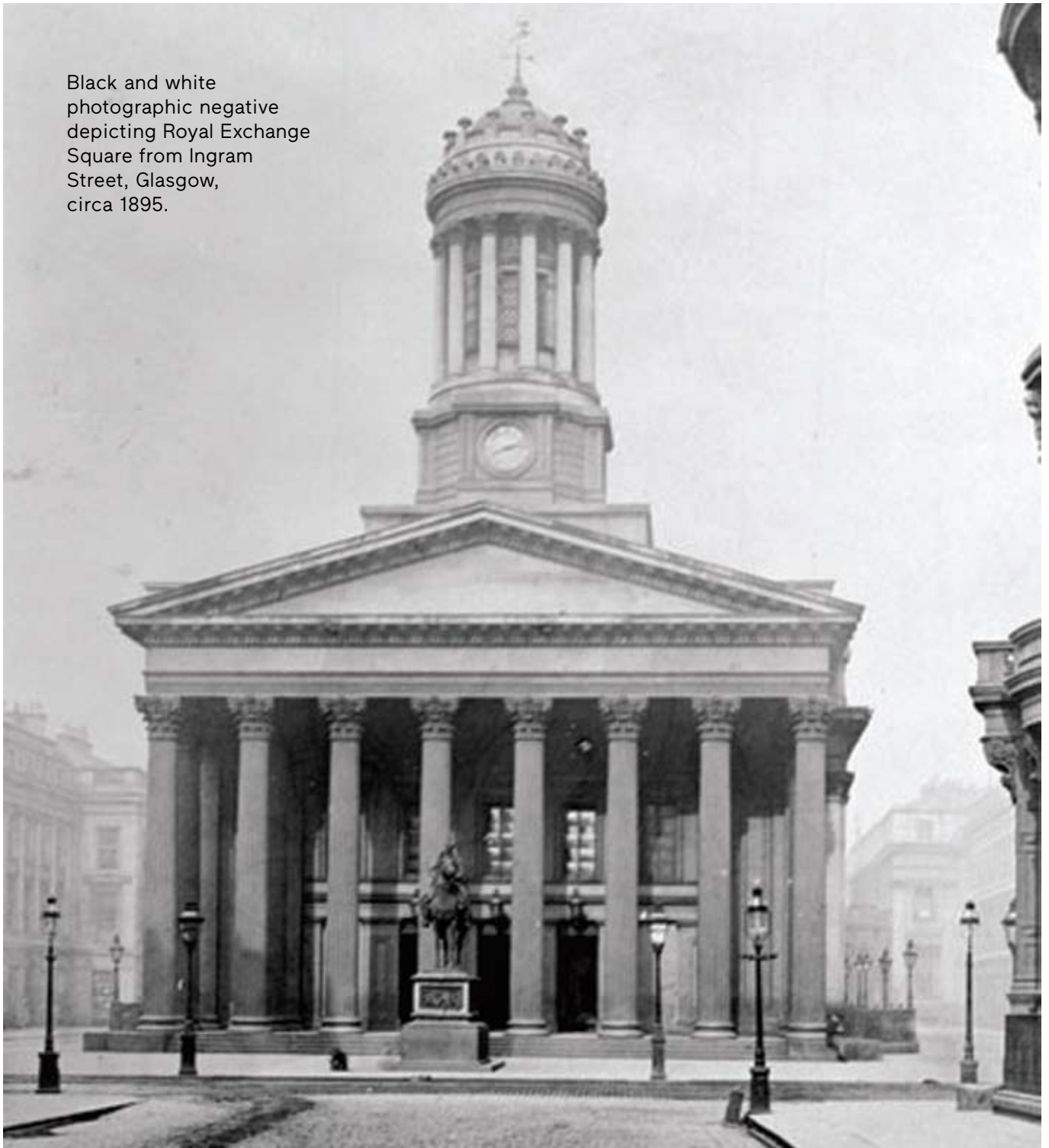


This object dates back to Victorian times when Govan was an independent burgh and not a part of Glasgow. It had its own services including a police force.

What do you think this cart was used for?

- For transporting bodies in the plague
- Taking drunk people to jail
- Selling milk

Black and white photographic negative depicting Royal Exchange Square from Ingram Street, Glasgow, circa 1895.



This building is now the Gallery of Modern Art. Outside the gallery is the equestrian statue of the Duke of Wellington. What object is often placed on his head?

Answers

1 2%

2 *The International Exhibition of 1888. There was a 2nd exhibition in 1901 to inaugurate the building.*

3 A scramble.

4 Ostrich.

5 1925 - In Selfridges Department Store, London on the 25th March. (1/2 a point for guesses from 1920-1930).

6 Linlithgow Palace.

7 *Body paint- After hours, she would often pen-line fellow workers' bare legs to look like seamed nylons which no one could afford. A manager heard she had drawing skills, and transferred her to design and her main job became painting the initials of brides and grooms on to the silk, or mock silk, banners to top wedding cakes!*

8 *Someone damaged the statue by pushing it over. For many years the sculpture had to be displayed behind a protective glass barrier.*

9 *Bog oak. This is wood from trees that have been buried in peat bogs or marshes and have been gradually fossilised over hundreds of years, turning the wood hard and black or very dark brown in colour.*

10 *Human Hair! Although not the first people to make jewellery out of human hair, the Victorians popularised mourning jewellery made from this material.*

11 *Bubonic plague (in this case, not caused by rats).*

12 3,000.

13 *Dolphin (White-Beaked Dolphin).*

14 *Paddy's Market.*

15 55,000 tonnes.

16 *Vesuvius.*

17 *The Tiber.*

18 *Over 3 metres.*

19 *Merkland Street.*

20 1958.

21 *Indigestible food regurgitated by the owl.*

22 *All of the above.*

Calabar or ordeal bean is extremely poisonous but is also used to treat eye problems such as glaucoma, constipation, epilepsy, cholera, and tetanus. Historically, people of Akwa Akpa administered Calabar bean to those accused of witchcraft or other crimes. Those able to eat the bean and live were considered innocent.

23 1890.

24 *This barrow was used by the police to remove drunk people from the streets and transport them to jail.*

25 *A traffic cone.*



The Open Museum
Your heritage in your hands