

# Welcome to Kelvin Hall Visual Storyboard





This is Kelvin Hall.





Come and have a look inside.





The Kelvin Hall Café is to your left. You can queue up to buy sandwiches and coffee here.





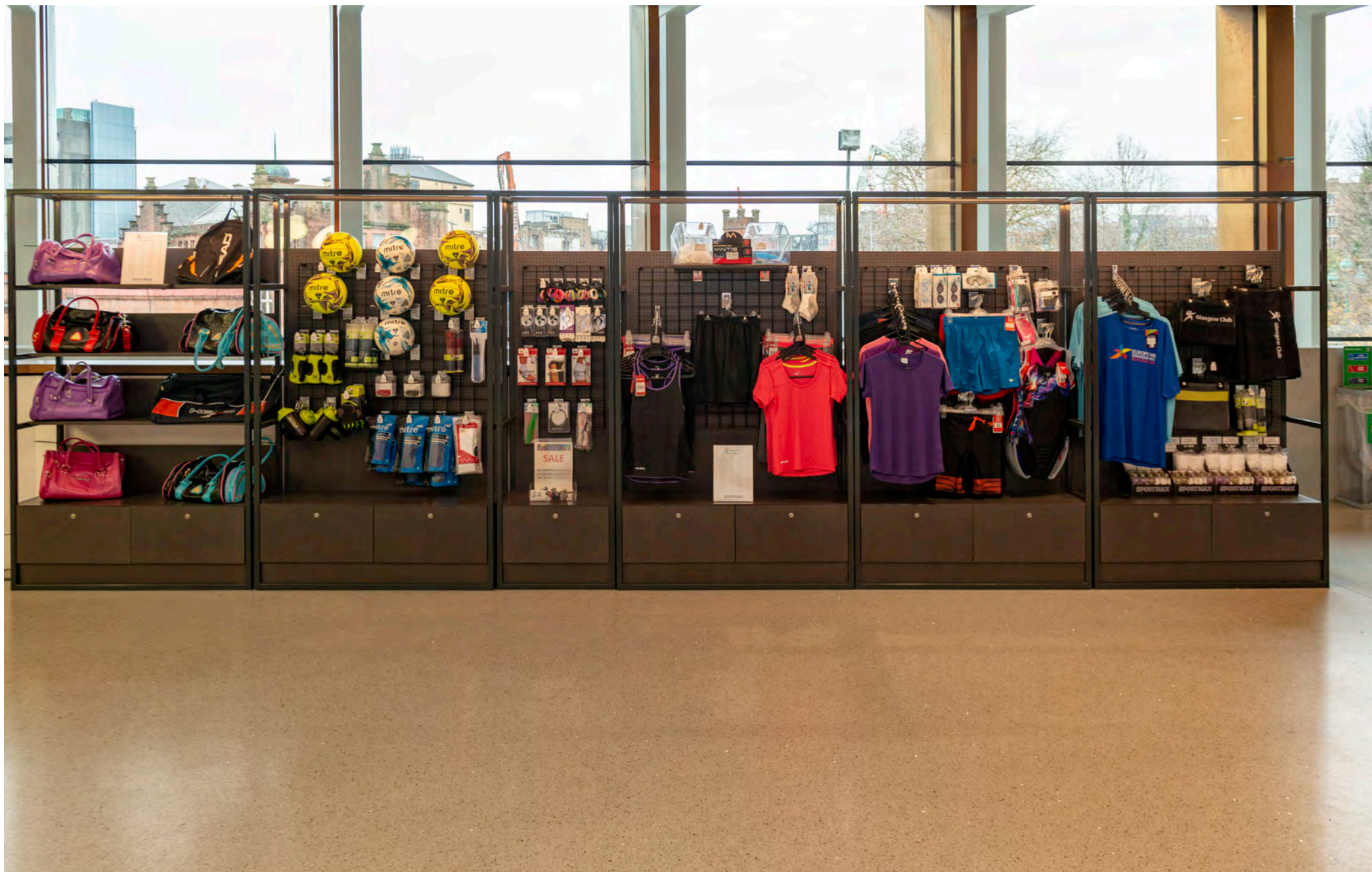
The Reception Desk is straight ahead. A Glasgow Life Assistant can help you if you ask.





You need to pay to use the gym, play sport or to take part in fitness classes.





You can buy sports clothes and equipment.





Staff all wear a 'g' logo.





This is the gymnastics hall.



This is the sports hall.





There are changing rooms. There are lockers to safely store your belongings. You need an orange wristband to use a locker. Orange wristbands can be bought for £2 at reception or borrowed for a deposit of £2.





There are Changing Places facilities.





You can look at museum objects and paintings.





There is a fairground mirror.





You can enter the gym here. A Glasgow Life Assistant will be nearby to help you.





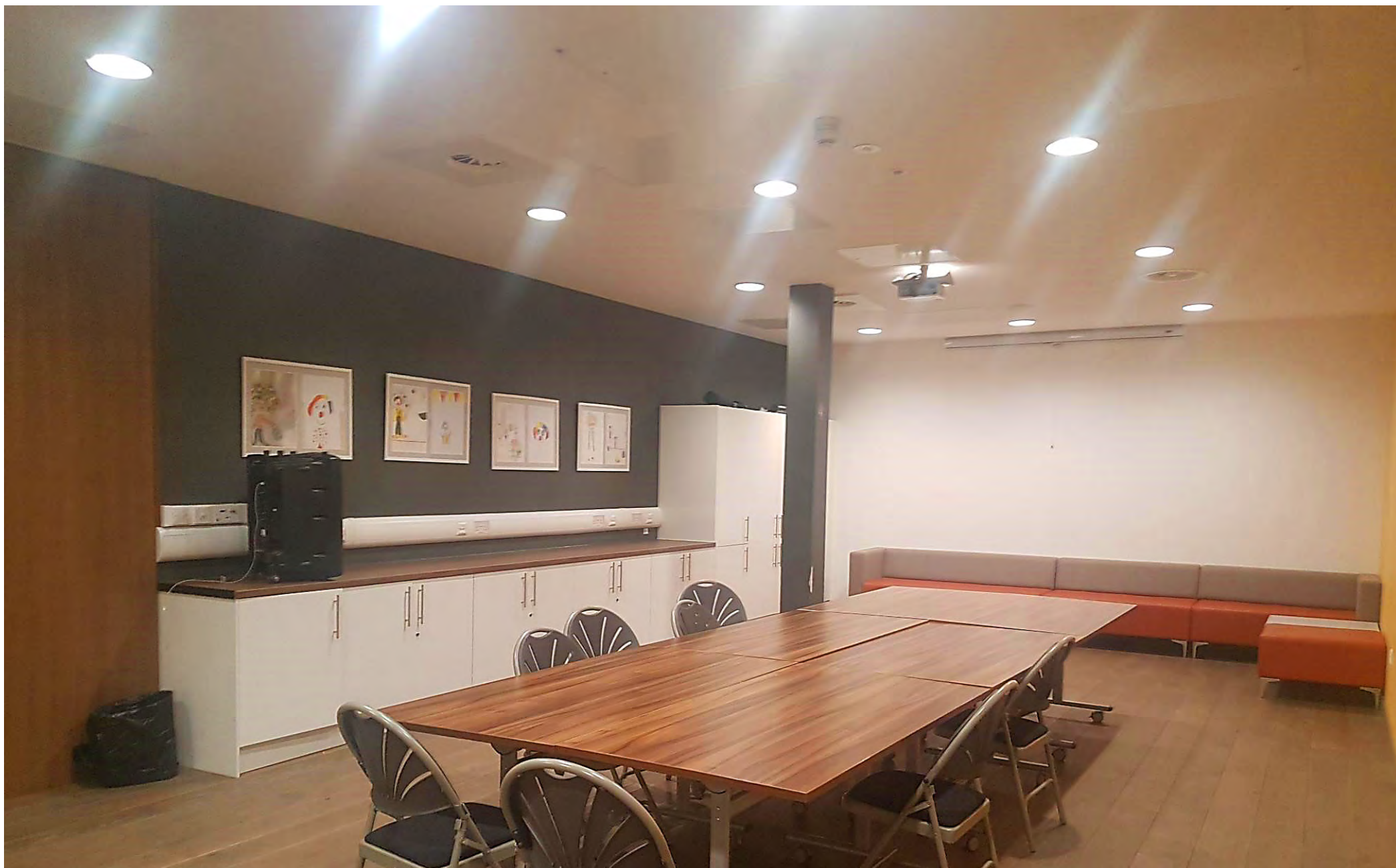
There is a museum store room. You can push the button to light up the window display.





Schools visit this space with a learning assistant. Sometimes this space is closed.





This is the Activity Space. Schools visit this space with a learning assistant. Sometimes this space is closed.





There is a lecture theatre and seminar rooms. University students visit these spaces.





There are stairs. There are lifts.





This is the National Library of Scotland's Moving Image Archive. You do not need to pay. Staff can help you if you ask. Library staff all wear a blue lanyard.





You can look at displays. You can select a film to watch on the big screen. You can sit and listen to a film using headphones. You can use the computers to search for films. Internet access and public Wi-Fi is available. This space is not open every day.





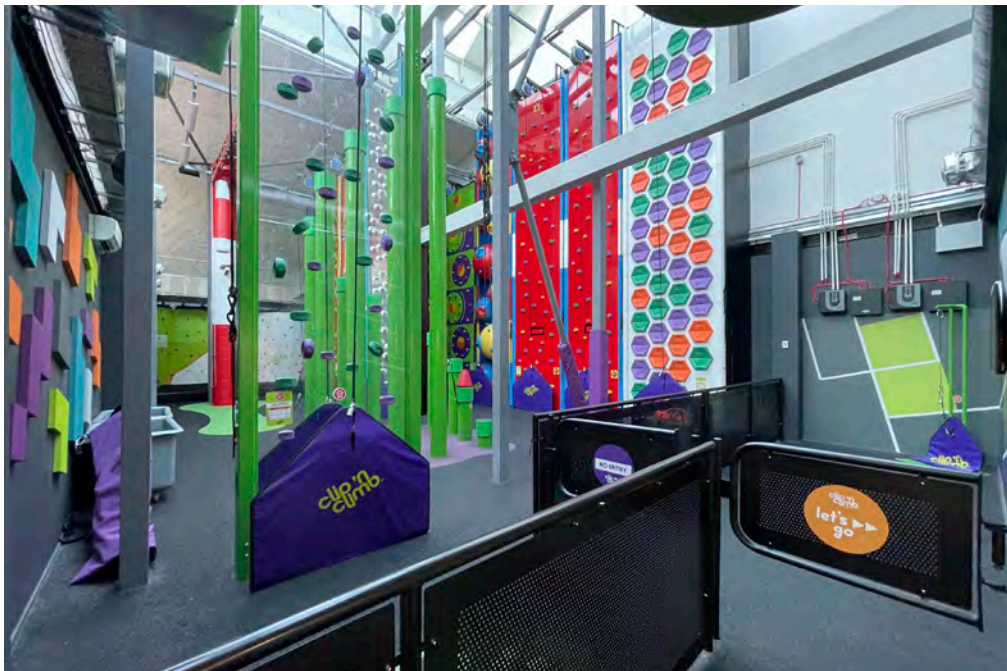
Upstairs there are dance studios.





This is the Soft Play and Clip and Climb Centre.

You can book tickets at reception to climb and play.







There is a quiet room.





The fire alarm makes a loud siren noise and lights flash. Kelvin Hall staff will guide you out of the building through a fire exit.

Do not go back inside the building unless a member of Kelvin Hall staff tells you that it is safe.



Thank you and see you soon.

Kelvin Hall is busiest on Saturdays.

This visual storyboard was up to date  
in March 2023.

Please check our website  
[www.kelvinhall.org.uk](http://www.kelvinhall.org.uk) for changes, and  
information on opening hours, public transport,  
parking and wheelchair access.

Phone 0141 276 1450

Email [info@glasgowlife.org.uk](mailto:info@glasgowlife.org.uk)

