

# The Burrell Collection

## ANIMALS AT THE BURRELL

Collect a floor plan from the front desk and then let's set off around the museum to see what we can find!



Head to the central galleries (clue the walls are painted navy blue!). Find this curious looking little bird, this object is called a Pyx (pronounced picks).

Look at the label, what did it used to store and what was it used for?

---

---

---

Answers on the next page



Nearby our bird, you will find this Aquamanile in the shape of a lion.

An Aquamanile is a fancy word, can you read the label and guess what this object is?

---

---

Why has it got that handle and what is it used for?

---

---

We are staying in the central galleries. Look for three paintings featuring some familiar animals.

The pigeon looks down at the dog, the dog looks across to the cat and the cat is ready to steal something.

What type of food is the cat attempting to snatch?

- Oyster
- Bowl of cream
- Piece of cheese



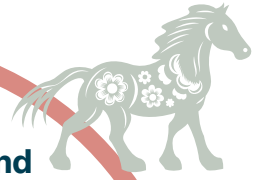
## Fun Fact!

The Burrell Family (who collected all these wonderful objects), owned a pet parrot! Visit the Hutton Room and you'll find some parrots.



### TOP TIP!

Remember our staff are super friendly, ask them for directions if you need to!

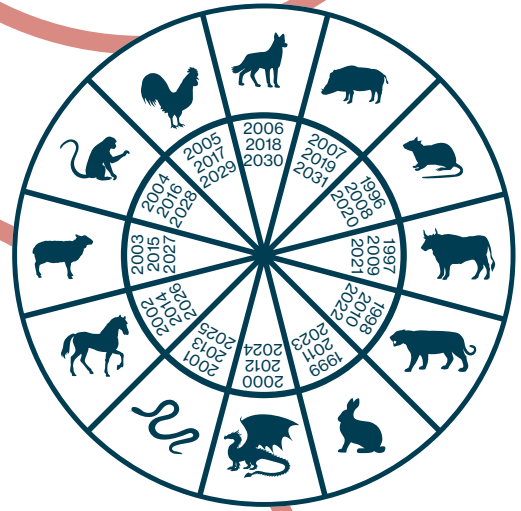


**Make your way to the East Galleries. Find the carpet from India that is labelled "Grotesque animal carpet fragment".**

The carpet shows a chain of unusual imaginary animals. Get inspired by what you can see on the carpet, use the space below to sketch your own imaginary animal, maybe it could be an animal of the future! A new species? Or maybe it could be your favourite animals combined?

**Head to the North Gallery and find the display of Chinese horses!**

In traditional Chinese culture the Chinese zodiac is very important, it is believed that your personality and qualities are reflected in your zodiac animal. People born in the year of the horse were believed to be animated, energetic and active – like the horse! Use the chart below to see which Zodiac animal you are!



**Design your animal in this space**

**ANSWERS**  
 Pyx – Usually hung up near the altar suspended via chains, used to store the communion wafers (bread) in the Catholic church.  
 Aquamanile – Used for storing water and washing hands, usually over a bowl, used in Christian/Catholic church or before eating together.  
 Painting – Cat is reaching out to grab an oyster.