

Welcome to the Riverside Museum **Visual Storyboard**





This is the Riverside Museum.

Come and have a look inside.



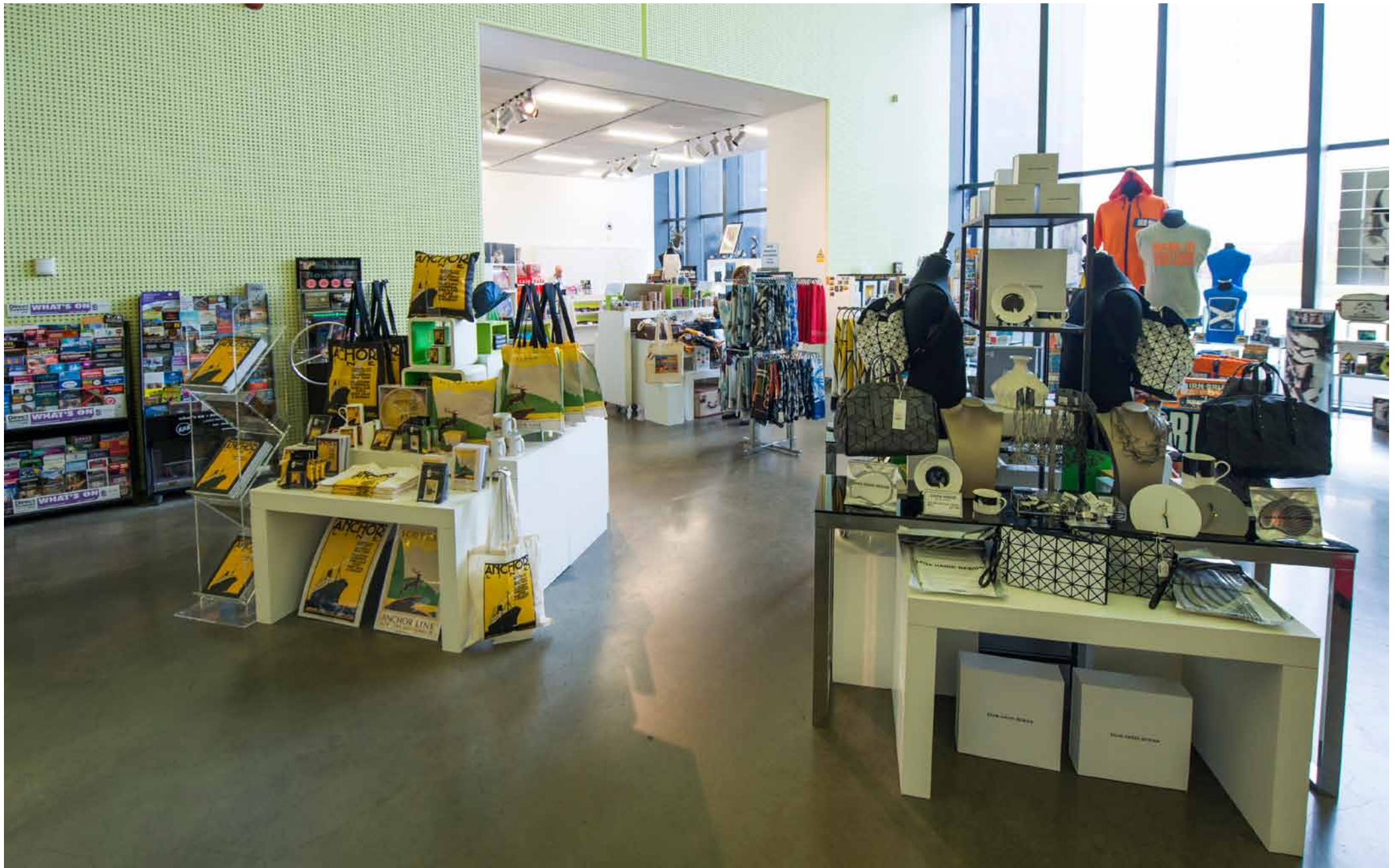
There are lots of objects in a relatively small space.



The reception is to your right. A gallery assistant can help you.



Museum staff all wear a purple 'g' logo.



The museum shop is to your right. You can buy gifts here.



You can look at transport.

The vehicles are fragile so do not touch.



There are steam trains. You can look inside from the platform.



There are stairs and a lift to the platform.



You can step inside some trams.

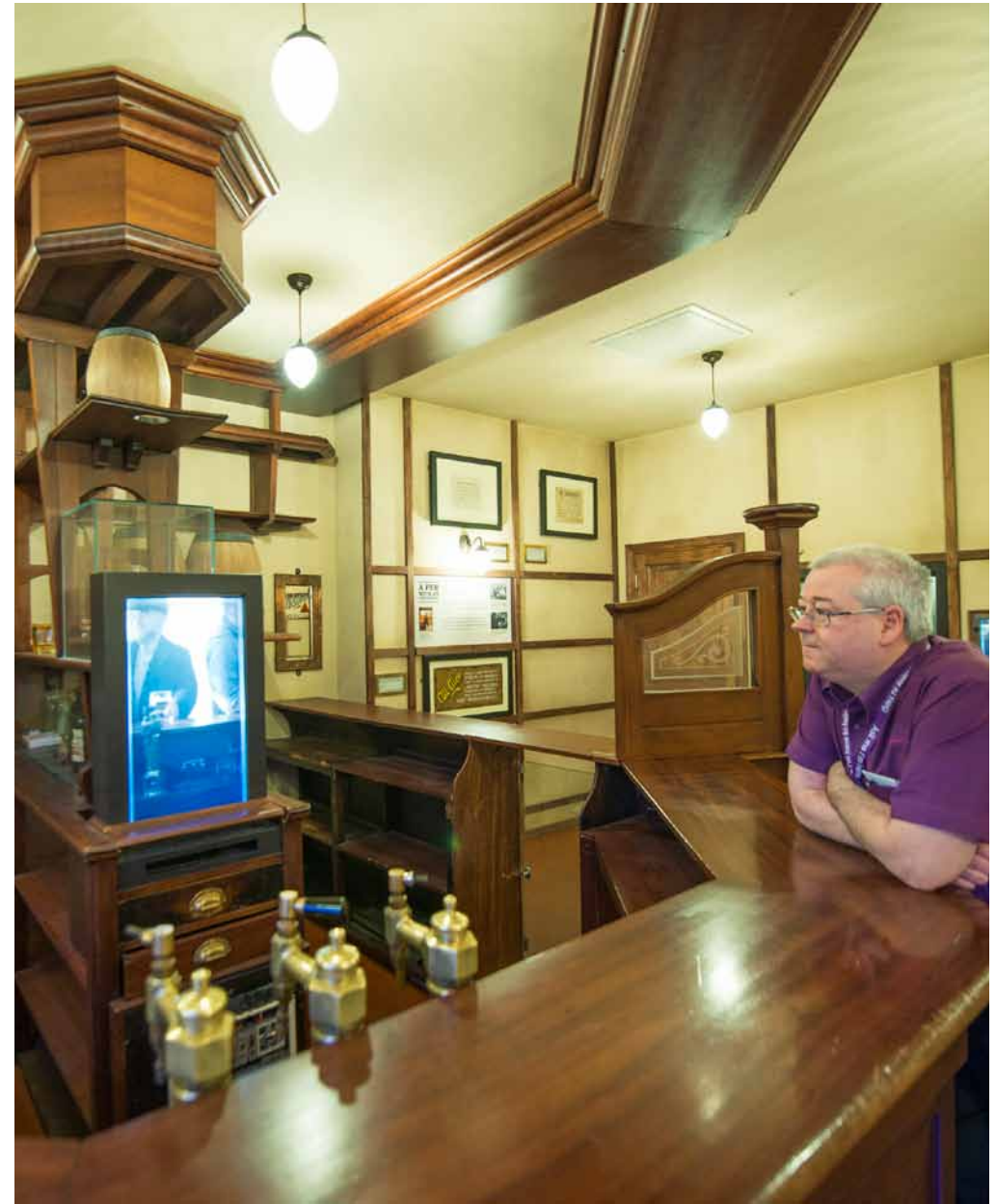


You can sit in the subway trains.



This is our old street. There are cobbles and tramlines on the road. The pavement is smooth.

You can hear sound effects such as horses' hooves, thunder and lightning.



This is our old street. You can go into the replica shops.

You cannot buy anything inside.



There are information touch-screens, videos and interactive games.



The ship launch show is loud.
It plays every half hour.

A countdown timer appears on the screen before
the show starts.



This is the learning space.

Schools visit this space with a learning assistant.

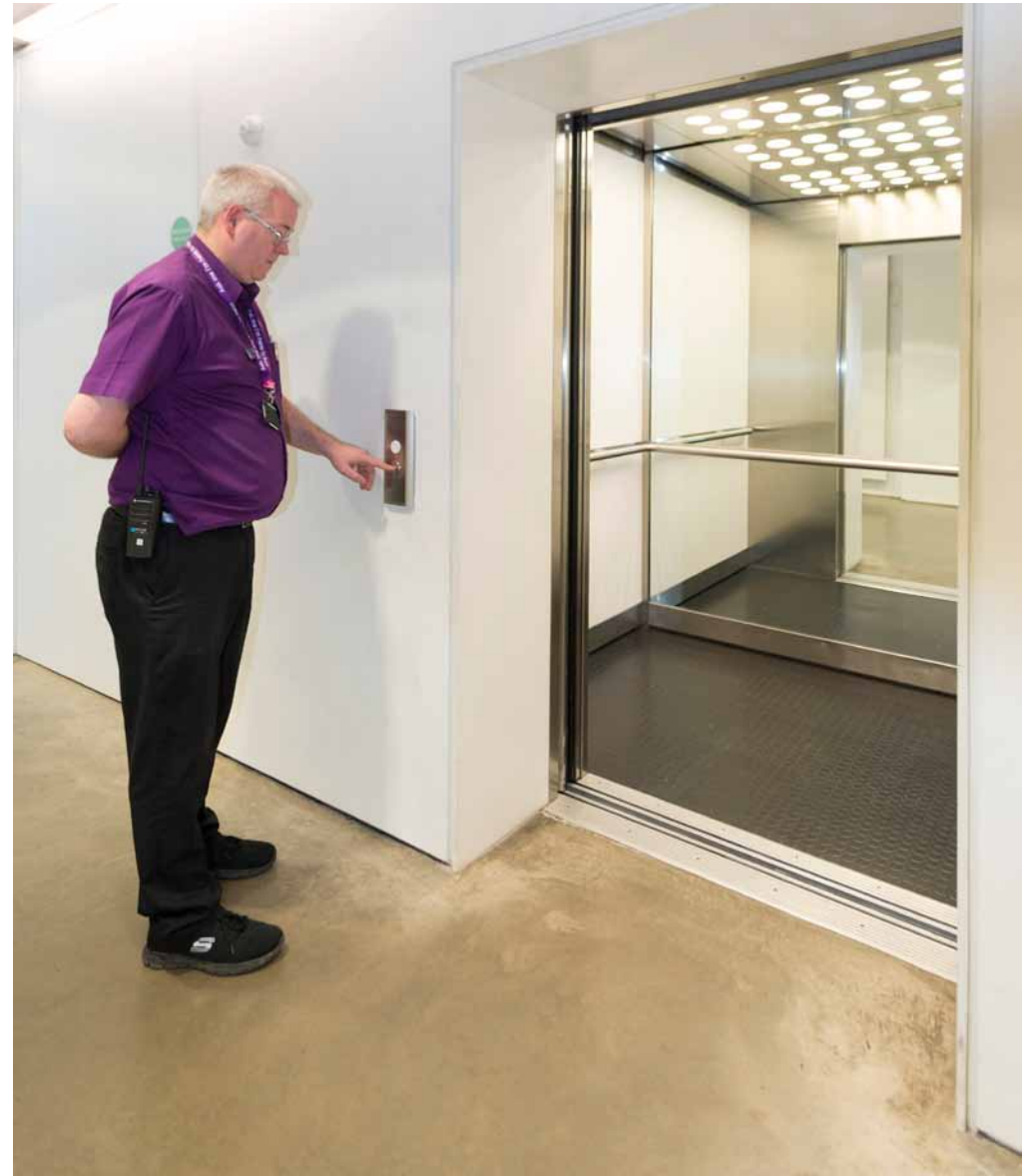
Sometimes this space is closed.



You can bring your own lunch to eat at our picnic spaces.

You can queue up to buy sandwiches and coffee at the Coffee Stop.

You can get table service and hot meals in the Riverside Café.



There are toilets.

There are lifts and stairs between both floors of the museum.



There are large windows like this one.



This is upstairs.
You can sit and watch the ships go by.



This is upstairs.
The road crossing display is noisy and busy.



The fire alarm makes a loud siren noise.

Museum staff will guide you out of the building through a fire exit.

Do not go back inside the building unless a member of museum staff tells you that it is safe.

Thank you and see you soon.

The museum is busiest during weekends and school holiday times.

This visual storyboard was up to date in March 2018.

Please check our website www.glasgowmuseums.com for changes, and information on opening hours, public transport, parking and wheelchair access.

Phone 0141 287 2720

Email museums@glasgowlife.org.uk

