

PALAEONTOLOGIST NOTES

SPACE FOR NOTES AND DRAWINGS.

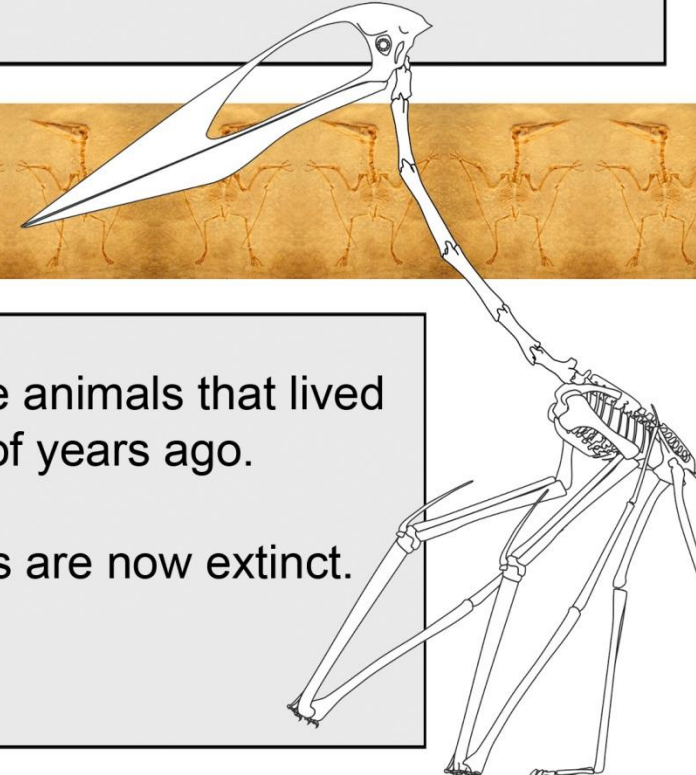
CREATURES OF THE PAST

NAME: _____

Today you are going to become a Palaeontologist.

A Palaeontologist is someone who studies dinosaurs and creatures of the past.

Write down two things you already know about dinosaurs.



Dinosaurs were animals that lived millions of years ago.

The dinosaurs are now extinct.

ANSWERS

Q - Do you think the Ichthyosaur walked on the land or swam in the sea?

A - The Ichthyosaur swam in the sea.

Q - Was the Cetiosaur a carnivore or a herbivore?

A - The Cetiosaur is a herbivore.

Q - Which fish do you think is the male and which fish is the female?

A - The big Coelacanth is the female.

How do we know dinosaurs existed?

Fossils

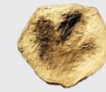
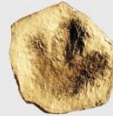
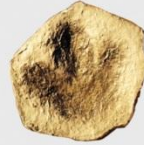
Fossils are bones, shells, footprints or parts of a creature which have been in the ground for so long they have turned to stone.

In the museum there are BODY fossils and TRACE fossils.

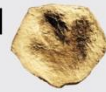


A BODY fossil is part of the creature.

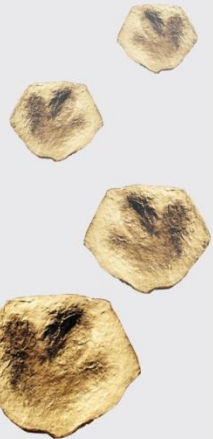
A TRACE fossil is something the creature left behind. Like a footprint.



Can you find the trace fossil of a dinosaur footprint?



Imagine a dinosaur that could make this footprint.
Draw it below.



Can you find this fossil?



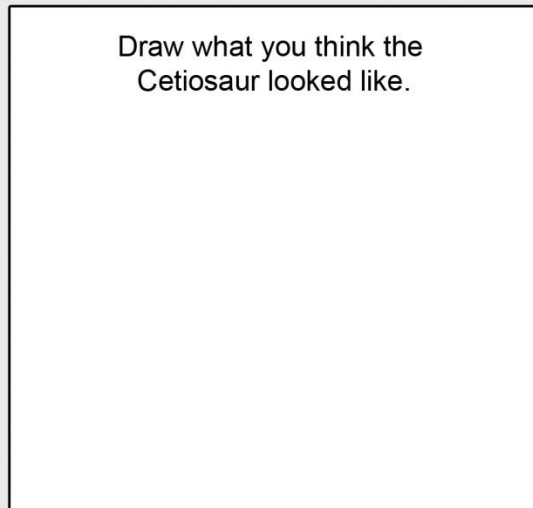
This bone is a body fossil from the leg of a giant dinosaur called a Cetiosaur.

Was the Cetiosaur a:

CARNIVORE

HERBIVORE

Draw what you think the Cetiosaur looked like.



Draw a circle around the correct word.

WORD BANK

Here are some important words you have heard today.

Trace Fossil

Pterosaur

Herbivore

Body Fossil

Palaeontologist

Coelacanth

Ichthyosaur

Extinct

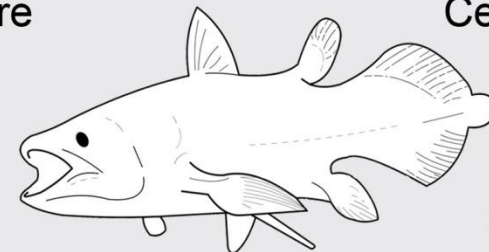
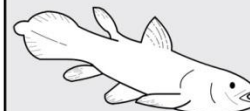
Ceratosaur

Dinosaur

Fossilised

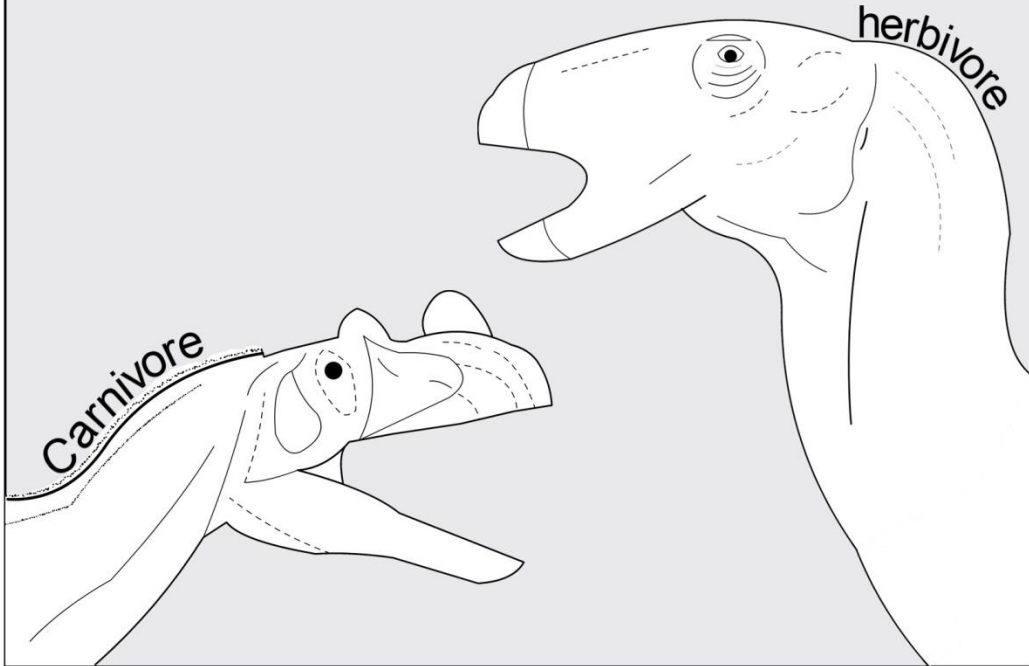
Carnivore

Cetiosaur



These dinosaurs have lost their teeth.

One of these dinosaurs is a carnivore, and one is a herbivore
Draw what you think their teeth
would look like in the dinosaur's mouth.



Draw something
a carnivore would eat.

Draw something
a herbivore would eat.

Can you find the Ceratosaur?



Look at the Ceratosaur's teeth,
what do you think it liked to eat?

The dinosaur is missing his
arms and claws.

Can you draw them on the
Ceratosaur's body?



Can you find the Pterosaur?

Do you think the Pterosaur is a:

A: adult

B: child

C: baby

Circle the correct one.

The Pterosaur was a carnivore and
liked to eat lots of fish.

Can you find a really big fish
for the Pterosaur to eat?



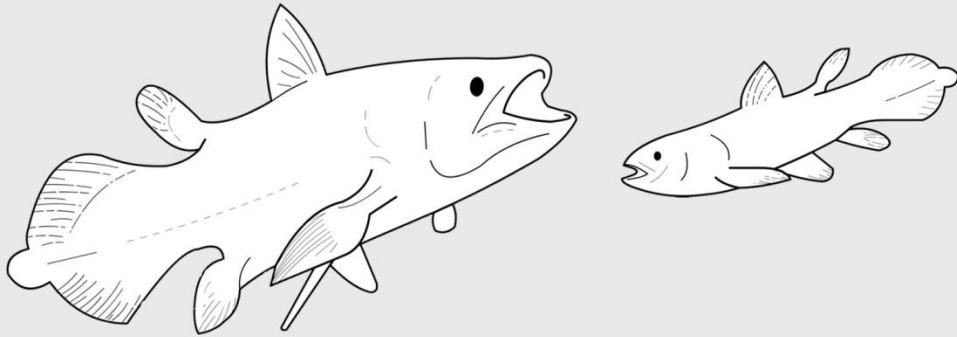
Have you found the Coelacanth?

Which fish do you think is the male and which fish is the female?

Draw a line to match the fish with the right word

male

female



CLUE: One of the fish has to be big enough to carry hundreds of eggs.

Can you find the Ichthyosaur?



Do you think the Ichthyosaur walked on the land or swam in the sea?

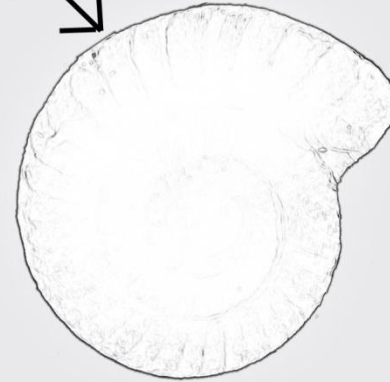
Can you find the Ammonites?

Ammonites were sea creatures with long tentacles and interesting patterns on their shells.



Draw what you think the patterns on the Ammonite's shell would look like.

Draw the tentacles coming out of the Ammonite's shell.



Write two words to describe this creature.

Can you match the start of each sentence with the correct ending?
One has been done for you.

Herbivores eat

Carnivores eat

The Coelacanth

The Pterosaur

The Ceratosaur

Dinosaurs lived

Lived in the sea

Millions of years ago

Plants

Has a long tail

Flew in the sky

Meat

