

Glasgow Museums: Bringing Learning to Life

Nursery, Primary
and Secondary
Programmes

2023-24



Welcome

to Glasgow Museums' 2023–24 programme for schools

We have an exciting and varied offer for nursery, primary and secondary school groups. Our workshops are designed to extend and enhance classroom learning.

Workshops are available at the following venues:

The Burrell Collection
The Gallery of Modern Art
Glasgow Museums Resource Centre
Kelvingrove Art Gallery & Museum
The People's Palace
Riverside Museum
St Mungo Museum of Religious Life & Art

Nursery and Primary sessions are listed under each venue – see pages 4 to 19. Our secondary offer is categorised by subject or theme – see pages 20 to 23.

Glasgow is fortunate to have world-class museum collections and our learning team uses these objects and artworks to create unique learning experiences.

Our programme is planned in consultation with teachers and other colleagues within Education Services. This ensures we continue to meet key educational priorities whilst creating inclusive experiences that meet the needs of all learners. As well as evaluating each of our workshops on an on-going basis we also meet regularly with teachers to keep abreast of developments in education.

New for 2023–24!

Themes for new resources and workshops introduced this year include:

- Earth Sciences at GMRC
- Identity for secondary schools at The Burrell Collection
- Empire and Migration tours at Kelvingrove Art Gallery and Museum
- Loan kits – world religions, Vikings and Still Life artefacts

Continuing Professional Development



We offer teachers' CPD on a range of topics. These use our wonderful collections to enhance teachers' knowledge and understanding, whilst providing ideas to develop teaching practice. This year's programme includes a series of visual art workshops for Glasgow Primary teachers in partnership with the Create Glasgow team.

For dates and further information please get in touch or follow us on twitter @ **museum_learning**. All sessions are listed on Glasgow CPD Manager; limited places may be available for teachers outwith Glasgow.

Session Charges 2023–24

Reduced charges are for Glasgow City Council educational establishments only. All non-Glasgow, independent and home educated groups pay standard charges.

Invoices will be sent after your visit. Glasgow City Council establishments pay through intercompany billing and will be asked for budget codes at the time of booking.

Remember all visits, whether facilitated or self-led, must be booked in advance. Please call us on **0141 276 9505 / 9506** or e-mail museums.schoolbookings@glasgowlife.org.uk

If you need to cancel a booking, please contact us by noon the day before, otherwise you will be charged for the full amount of the session.

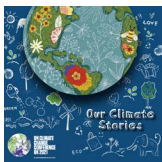
Many of our sessions link to key topical themes being addressed in schools. Our collections and venues can help put these topics in context and provide an engaging alternative to in-school learning.

Climate Change and Sustainability

One of the most pressing global topics today, Glasgow Museums and our partners at the RSPB, offer various workshops focusing on the human impact on the environment and how we can counteract it. Here's a selection of relevant workshops:

- Greener Glasgow – Walking Tour (page 8)
- Our Planet: Endangered and Extinct Wildlife at Kelvingrove Museum (page 12)
- Whose Rainforest at GMRC (page 10)
- RSPB-led sessions for primary (page 13) and secondary (page 23)

Why not travel by public transport to reduce your carbon footprint? Group tickets are available for both rail and bus travel and bookable in advance.



Legacies of Slavery & Empire: Glasgow's Connection

As part of Glasgow Museums' ongoing commitment to disseminate Scotland's role in the British empire, we offer a number of workshops, trails and teachers' resources aimed at both primary and secondary schools focusing on colonialism, resulting migration and the transatlantic trade of enslaved people. Learners will explore legacies still visible today such as street names, statues and buildings, how emigration as well as immigration has shaped the country and investigate original artefacts that testify of how Glasgow's wealth was intrinsically linked to the suffering and deaths of enslaved Black people. See the following workshops and resources:

- A History of GoMA: Slavery, Empire and Contemporary Art – new workshop at GoMA (page 22)
- Glasgow's Hidden Legacies: The Transatlantic Slavery Connection – workshop at the People's Palace plus self-led walking trail of city centre (page 15)
- Glasgow City of Empire tours at Kelvingrove Museum (page 22)



A View in the Island of Jamaica
by James Mason after George Robertson



The Burrell Collection

2060 Pollokshaws Road, Glasgow G43 1AT

The recently refurbished Burrell Collection, in the heart of Pollok Park, has been awarded the accolade of Art Fund Museum of the Year. With more of our collections on display than ever before and lots of immersive, interactive displays, it's a great place for an educational visit. Facilities include packed lunch areas, Changing Places toilet and outdoor play areas. A comprehensive suite of self-led trails is available for visiting school groups.

To book a visit phone 0141 276 9505 / 9506
or email
museums.schoolbookings@glasgowlife.org.uk

Most workshops can be adapted for ASL/
BSL – please see back page for details.

NURSERY

Nature Everywhere

Early level, Pre-5s

Per group: £15 (Glasgow) or £20

Nature is all around us, and it can be found in the museum too! Children will explore and handle nature-inspired museum objects and visit our interactive flower gallery where they will get the opportunity to create 3d paper artwork inspired by what they have seen.

EXA 0-02a; SOC 0-08a; SOC 0-12a; LIT 0-01a

Who's in the Castle?

Early level, Pre-5s

Per group: £15 (Glasgow) or £20

Join us on this interactive journey inspired by the knights, princes and princesses who feature in our wonderful collection here at The Burrell Collection. Join us on this interactive journey inspired by the knights, princes and princesses who feature in our wonderful collection here at The Burrell Collection. Try on a gauntlet from a suit of armour, join in with a story in our storytelling gallery, visit the Hutton Castle room and pass through the Hornby Portal from Yorkshire Castle.

EXA 0-02a; SOC 0-04a; LIT 0-01c



Lunar New Year

Early level, Pre-5s

Per group: £15 (Glasgow) or £20

Available January and February only.

Every year the moon goes through 12 phases. What is a phase? We are going to answer that question, tell some stories and go on a journey to find out how lunar new year has been traditionally celebrated in different parts of the world.

EXA 0-14a; EXA 0-16a; MNU 0-02a

PRIMARY

Journey on The Silk Road

First / Second level, P4–7

Free (Glasgow) or £45

Find out why the Silk Road was such an important route for so many people from different cultures and countries across the Middle East, Asia, Africa, and Europe. See our wonderful Camel Caravan Tapestry and hear a tale about the discovery of silk. Handle objects from the collection and smell spices associated with this ancient trade route; then trade your wares in our pop-up market.

EXA 1-02a; 2-02a; MNU 1-09a; SOC 1-04a; 2-04a; LIT 1-07a; LIT 2-07a

Nature in Art and Design

First / Second level, P1–5

Free (Glasgow) or £45

Nature has inspired artists and designers throughout history. Learners will have the opportunity to get up close to works by artists such as Cézanne and Manet and try some of the techniques they used while compiling their own artist's sketchbook. They will visit the beautiful flower gallery and discover one of the oldest Persian garden carpets while developing practical skills such as drawing, sketching and leaf rubbing.

LIT 1-07a; LIT 2-07a; EXA 1-02a; EXA 2-02a; EXA 1-03a; SOC 1-08a

Life in the Castle

Early / First level P1–3

Free (Glasgow) or £45

Learn new words while identifying and handling pieces of armour. Find out all about life at Hutton Castle and play a game of 'Find The Object' in The Hutton room. Pass through the Hornby Portal from Yorkshire Castle and go back to the Learning Room for some fun, medieval activities.

EXA 0-02a; SOC 0-04a; LIT 0-01c

Express Yourself! – Our Identities Past and Present

Second level, P6–7

Free (Glasgow) or £45

Humans throughout history have expressed their personality in different ways – through adornment, symbols, objects and trends. While exploring the concept of stereotype, handling museum objects, solving riddles in the galleries and making art using different materials and techniques, we will discuss the power of objects in telling stories and why we all need to embrace our identity, differences and uniqueness.

HWB 2-10a; SOC 2-04a; SOC 2-06a

To book a visit phone 0141 276 9505 / 9506 or email museums.schoolbookings@glasgowlife.org.uk
If you wish us to book a BSL interpreter for a workshop, please allow 3 weeks' notice
Our venues open 10am Mon–Thurs and 11am Friday

Tales from Ancient China

First / Second level, P3–6

Free (Glasgow) or £45

Throughout history, the stories and myths from Ancient China have been depicted in art, literature; they even appear today in the modern media. In this session we will meet dragons in the clouds, the Goddess Guan Yin and travel over the sea with the Eight Immortals – creating and dramatising our own stories on the way.

EXA 2-14a; SOC 1-04a; 2-04a; SOC 2-04a; SOC 2-06a



The Burrell Collection – ASN programme

Your class can now book in for a familiarisation visit before participating in an adapted learning session. All sessions are free of charge.



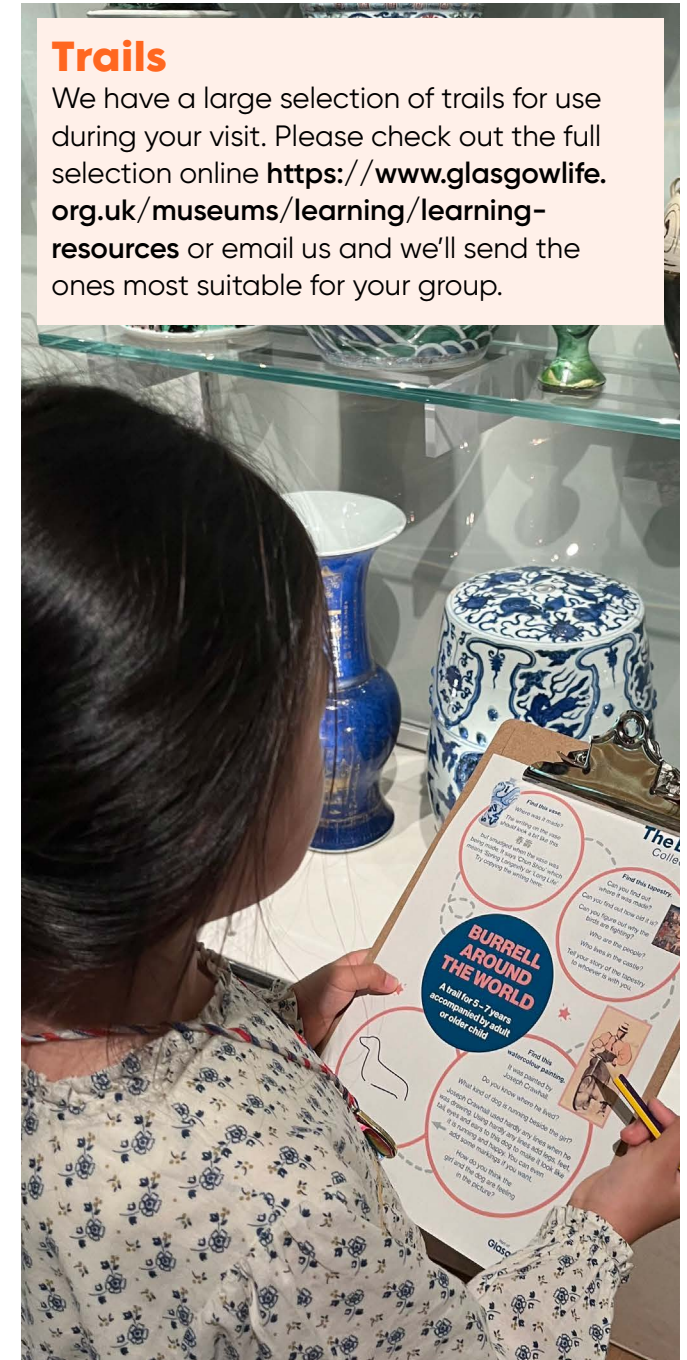
Welcome to the Burrell – familiarisation visit

This gentle introduction to the Burrell will allow your pupils to become familiar with the museum. The class will see the spaces that their next workshop will take place in, meet museum staff who will support them and get used to the facilities in the venue.

HWB 0-07a; HWB 1-07a; HWB 2-07a; HWB 3-07a; HWB 4-07a

Trails

We have a large selection of trails for use during your visit. Please check out the full selection online <https://www.glasgowlife.org.uk/museums/learning/learning-resources> or email us and we'll send the ones most suitable for your group.





Gallery of Modern Art

Royal Exchange Square, Glasgow G1 3AH

The Gallery of Modern Art (GoMA) uses its collections, exhibitions and learning programmes to inspire vibrant conversations and creative outcomes. It offers thought-provoking displays of paintings, sculptures, prints and installations. The Learning & Access team encourages active participation through a range of engaging activities, both within the studio and on the gallery floor.

GoMA is at the heart of the city, alongside excellent public transport links – why not travel by public transport?

**To book a visit phone 0141 276 9505 / 9506
or email
museums.schoolbookings@glasgowlife.org.uk**

Most workshops can be adapted for ASL/
BSL – please see back page for details.

PRE-5

Materials!

Early Level, Pre-5s

Per group: £15 (Glasgow) or £20

In this active and thought-provoking workshop, children will go on an exciting journey of discovery in the gallery. They will explore and recognise different materials, colours and shapes in GoMA's artworks. They will then be encouraged to express their findings and develop their communication skills.

MTH 0-16a; EXA 0-07a; LIT 0-14a

Mini Pop Art and Colour Prints

Early Level, Pre-5s

Per group: £15 (Glasgow) or £20

Inspired by our pop art on display, learners will experiment with colour and mark making to discover their effect. They will then develop their fine motor skills by designing and making their own print.

TCH 0-11a; EXA 0-05a; HWB 0-21a

Tiny Creatures

Early Level, Pre-5s

Per group: £15 (Glasgow) or £20

What animals are hidden in the galleries? Learners will explore GoMA to find representations of wildlife in the artworks and use a combination of sound and movement to communicate their discoveries. Concludes with learners making their own tiny clay creature.

MNU 0-01a; MTH 0-16a; HWB 0-21a



PRIMARY

Pop Art and Colour Prints

First / Second Level, Primary 1–7
Per class: Free (Glasgow) or £45

Taking inspiration from artists Eduardo Paolozzi and Bridget Reilly, learners will explore colour, design and composition and will then print their own pop art masterpiece to take home with them.

EXA 2-02a; EXA 2-06a; LIT 1-02a

Modern Art Explorers

First / Second Level, Primary 1–7
Per class: Free (Glasgow) or £45

In this dynamic workshop learners will go on a treasure hunt in the galleries, giving them an insight into different artworks and mediums used in contemporary art. Working in groups, they will express and communicate their observations, thoughts and feelings in response to the displays and create their own colourful artwork to take away.

EXA 1-04a; EXA 1-07a; LIT 1-02ad

Clay-tastic Sculpture

First / Second Level, Primary 1–7
Per class: Free (Glasgow) or £45

Pupils will compare and contrast scale, materials and style of contemporary sculptures and 3-D objects. Inspired by the exhibitions, they will focus on the use of clay, exploring their creativity to produce personalised clay objects.

MTH 1-16a; EXA 2-03a; LIT 1-14a

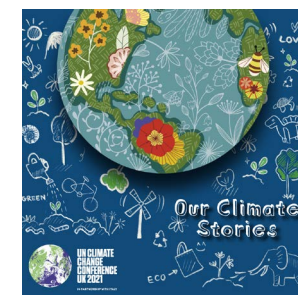


A Greener Glasgow – Walking Tour

Second Level, Primary 5–7
Per class: Free (Glasgow) or £45

Starting inside the gallery with an introduction to Glasgow's growth and industrialisation, this session then moves outside for a walk round the city centre. Together we'll look at initiatives and changes which have been made to make it greener, such as electric vehicles, pedestrianisation and urban greenspaces. Please dress for walking and weather. Route approx. 1 mile and includes several road crossings. Additional pre-visit information will be provided to assist teachers in writing their risk assessment.

SOC 2-06a; SOC 2-08a; SOC 2-09a





Glasgow Museums Resource Centre

200 Woodhead Road, Nitshill
Glasgow G53 7NN

Have you ever wondered what goes on behind the scenes at Glasgow Museums? Bring your class to explore Glasgow Museums Resource Centre. This museum storage facility in the south of Glasgow holds hundreds of thousands of objects, including paintings, sculpture, arms and armour, natural history, transport, and Ancient Egyptian treasures.

To book a visit phone 0141 276 9505 / 9506
or email
museums.schoolbookings@glasgowlife.org.uk

Most workshops can be adapted for ASL/
BSL – please see back page for details.

NURSERY

Bug's Life

Early Level, Pre-5s

Per group: £15 (Glasgow) or £20

Seasonal: available April–end Sept



Children investigate the amazing world of insects from the museum collection and the local environment in this hands-on workshop. In our stores, they will discover some strange and beautiful bugs from around the world, before collecting safari jars and heading off to find out what lives in our grounds. This is an opportunity to introduce the idea of wildlife conservation to young learners.

SCN 0-01a

By the Sea

Early Level, Pre-5s

Per group: £15 (Glasgow) or £20

This multi-sensory session conjures up the seaside. Children will enjoy digging in the sand to discover some of the wildlife to be found along our own shores. They will then explore our stores to learn about some of the weird and wonderful creatures that live in the oceans around the world.

EXA 0-07a

PRIMARY

Ancient Egypt: Passport to the Afterlife

First Level, Primary 3–4

Per class: Free (Glasgow) or £45

Pupils will handle real Ancient Egyptian objects and learn about mummification. They'll find out about some of the rituals the Ancient Egyptians believed led to the afterlife and take part in a drama about the Weighing of the Heart Ceremony.

SOC 1-04a

Ancient Egyptian Maths and Science

First Level, Primary 3–4

Per class: Free (Glasgow) or £45

Ancient Egyptians needed to use maths and science to build pyramids, make mummies and move huge statues across hundreds of miles. Work in groups to solve problems faced by these people thousands of years ago, handle objects they made and learn to measure and weigh like the Ancient Egyptians did.

MTH 1-12a; SOC 1-04a



Romans: The Final Frontier

First/Second Level, Primary 3–5

Per class: Free (Glasgow) or £45

Nearly 2,000 years ago the Romans invaded Scotland ... and then they left. What did they do here? What legacy did they leave? Using real Roman artefacts and replica costumes and weaponry, learners will deepen their understanding of Glasgow's connections to the Romans, including Rome's final frontier – the Antonine Wall. Lots of STEM activities including firing a ballista!
SOC 1-01a; SOC 1-02a

Loan Kits for Schools

Romans: we have 3 different themed kits containing high quality replicas. Choose from Legionary Soldier, Off Duty Soldier or Occupation and Exchange. These kits are free of charge and provided in partnership with Historic Environment Scotland.

Vikings: a new kit exploring everyday life in the time of the Vikings.

Loan period is approx. 2 weeks.

Collect and drop off from GMRC.

STEM: Innovation and Invention – from Ancient to Modern Times

Second Level, Primary 5–7

Per class: Free (Glasgow) or £45

This STEM workshop explores the impacts of human inventiveness, from the stone age to the modern day. Learn how people overcame challenges using inventions that have allowed people today to communicate, travel and live longer than ever before. We'll look at examples ranging from ancient machines to jet engines, bullroarers to mobile phones, and ancient medicines to ultrasound scans.

SCN 2-20a; SOC 1-04a

The Great War

Second Level, Primary 5–7

Per class: Free (Glasgow) or £45

This workshop provides an opportunity to explore WW I through primary source material. Pupils will listen to personal Glaswegian letters from the Western Front, experiment with trench technology, pose in uniform like the soldiers did and find out why you can't spend a Dead Man's Penny. Supports the novel *Private Peaceful*.

SOC 2-01a

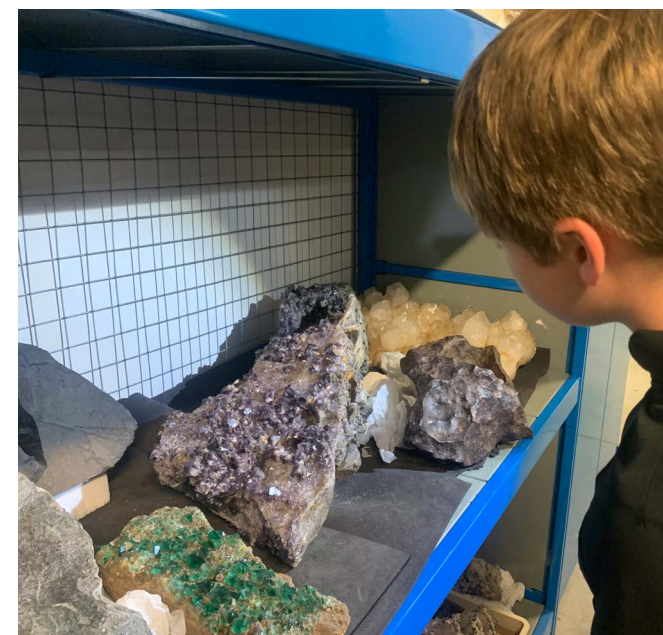
Whose Rainforest?

Second Level, Primary 5–7

Per class: Free (Glasgow) or £45

Pupils will explore the world of the rainforest, handle objects from the Amazon and learn about the lives of the people living there. Using handling objects, learners will role play those with competing interests in the rainforests – debating some of the important environmental issues that surround this topic. Supports global citizenship outcomes.

SOC 2-08a



NEW

Materials of our Planet

First, Second Level Primary 4–7

Per class: Free (Glasgow) or £45

Everything we use comes from planet Earth! Investigate and understand where we get the materials to make the everyday things that surround us. Learn about the forces and processes involved in the creation and evolution of our planet through scientific observation of different rocks and minerals from lava to meteorites, petrified trees and purple amethysts.

SCN 2-17a



Kelvingrove Art Gallery and Museum

Argyle Street, Glasgow G3 8AG

An exciting range of displays and exhibits awaits learners at Kelvingrove, including objects from Ancient Egypt, wildlife specimens, fossils and world-famous art. Facilities include an education suite, packed lunch areas and shop. Kelvingrove Park is on the doorstep, so why not make a day of it and spend some time in the park? The RSPB offer field teaching sessions in the park each Wednesday – see page 13 for more info.

To book a visit phone 0141 276 9505 / 9506 or email museums.schoolbookings@glasgowlife.org.uk

Most workshops can be adapted for ASL/BSL – please see back page for details.

PRE-5S

Tracks, Trails & Dinosaur Tales

Early Level, Pre-5s

Per group: £15 (Glasgow) or £20

Wearing dinosaur explorer outfits, pupils will join us in our Creatures of the Past gallery. Here they can see a Ceratosaur's skeleton, the flying Pterosaur, and a giant dinosaur footprint.

[SOC 0-19](#); [MNU 0-01a](#)



PRIMARY

Expressions & Emotions

Early/First Level, Primary 1-2

Per class: Free (Glasgow) or £45

Our facial expressions can tell a lot about our mood and how we are feeling. Pupils will explore the emotions and characters of those featured in our portraits and sculptures. It also includes a practical activity, making a head from clay.

[EXA 0-05a](#); [EXA 0-07a](#)

Fossils of the Dinosaur Age

First Level, Primary 2-4

Per class: Free (Glasgow) or £45

Learners will find out what fossils are and what they can tell us about dinosaurs and other creatures that lived in the past. This workshop includes handling fossils and exploring our Creatures of the Past gallery.

[SOC 1-03a](#)

Life & Death in Ancient Egypt

First / Second Level, Primary 3-5

Per class: Free (Glasgow) or £45

What was life like in Ancient Egypt? How did they prepare for death and the afterlife?

Learners will examine the evidence through exploration of gallery displays, object handling and museum interactives, and discuss what it tells us about the Ancient Egyptians.

[SOC 2-01a](#)



Glasgow: City of Empire and Migration

Second Level, Primary 6–7

Per class: Free (Glasgow) or £45

Pupils will explore our new display 'City of Empire' which focuses on Glasgow's historic connection to Empire and Slavery and the impacts this made on the development of the city. We will also discover how this history has shaped migration to Scotland and the creation of a diverse city.

[SOC 2-02a](#), [2-03a](#)

Famous Artists at Kelvingrove

Choose one of the following themed options:

The French Impressionists

or

Glasgow's Art and Artists – exploring artists based in, or inspired by, a city with rich history and amazing culture

or

Charles Rennie Mackintosh and the Glasgow Style (from January 2024 onwards)

First / Second Level, Primary 3–7

Per class: Free (Glasgow) or £45

Each of the above themed sessions include an interactive tour of our galleries allowing pupils to have a closer look at artworks on display. Following the tour, pupils will participate in a practical art activity to explore the artists' styles and techniques in more depth.

[EXA 1-07a](#); [EXA 1-02a](#); [EXA 2-05a](#)

New! World War Two: Self-led Discovery Trail

Second Level, Primary 5–7

Per class: Free (Glasgow) or £45

Learners will work in groups to explore museum objects and paintings linked to WWII, such as the Spitfire and a sculpture of Sir Winston Churchill. This session is self-led, encouraging independent discovery of the displays through discussion and note taking. Pre-visit information will be provided to teachers to help them prepare for facilitating this session themselves.

[SOC 2-01a](#); [SOC 2-03a](#)

Our Planet: Endangered and Extinct Wildlife

Second Level, Primary 5–7

Per class: Free (Glasgow) or £45



What are the human and environmental impacts which lead to wildlife extinction? Starting in our Creatures of the Past gallery we'll explore why dinosaurs became extinct. We'll then look at a range of animals from around the world which are currently endangered, and through practical activities investigate the impact humans are having on their survival.

[SOC 2-08a](#); [SCN 2-01a](#)





RSPB at Kelvingrove

The RSPB are continuing their successful partnership with us by offering an exciting programme of workshops based outside in Kelvingrove Park. RSPB Scotland is part of the RSPB, the UK-wide charity working to secure a healthy environment for birds and wildlife, helping to create a better world for us all. Available Wednesdays during term time. All sessions are free and timing vary slightly from Glasgow Museums' workshops.

Workshop durations

Nursery classes: 45 minutes

Primary & Secondary classes: 1 hour

Additional Support Needs (ASN) Groups:

Sessions can be adapted to meet the needs of the group.

Minibeast Safari

Early & First Level, Nursery – P4

Not available to book in winter.

Explore different microhabitats, learning about minibeasts and how to become a worm charmer! We'll do a bug hunt using pots, magnifying glasses and sweep nets.

Explore Urban Nature

Second Level & BGE, Primary 5–7,
Secondary 1–3

Explore the wonderful wildlife living right here in Glasgow! We'll learn about different habitats, species and how they've adapted to living in an urban environment.

Aquatic Adventures

First & Second Level, Primary 1–7

Discover the wonders of life underwater through pond dipping. We'll see what we can catch in the pond and what different minibeasts can tell us about water quality.

Beginner Birders

First & Second Level & BGE,
Primary 1–7, Secondary 1–3

Practice your identification skills while learning about different habitats and bird behaviour. Activities will vary depending on age; including how to use ID guides, binoculars and carrying out surveys.

Urban Wildlife Detectives

Second Level & BGE, Primary 5–7,
Secondary 1–3

Discover the different wildlife species living in our city through an introduction to animal tracks and signs. We'll look for footprints, feathers, feeding signs and more, making field notes and sketches as we go.

Climate Change Champions

Second Level & BGE, Primary 5–7,
Secondary 1–3

Understand what climate change is, its impacts and what actions we can take for a sustainable planet. We'll model the greenhouse effect to visualise how carbon is becoming stored in our atmosphere before having a go at designing a more climate and nature friendly city.

Resources / Trails

We have a beautifully illustrated trail of Kelvingrove Park for groups to use on a self-led basis. Copies can be emailed on request for printing in school.





People's Palace

Glasgow Green, Templeton Street
Glasgow G40 1AT

The People's Palace explores the development of the city and people of Glasgow from 1750 to the present. Children will discover how Glasgow became the industrial 'workshop of the world', see how a whole family lived in a 'single-end', and follow the good times at the dancing or 'doon the watter'. The People's Palace is situated within the historic Glasgow Green.

**To book a visit phone 0141 276 9505 / 9506
or email
museums.schoolbookings@glasgowlife.org.uk**

Most workshops can be adapted for ASL/
BSL – please see back page for details.

Please note, we are fundraising for the redevelopment of the People's Palace. The project timescale is yet to be confirmed and may mean we are unable to offer workshops at the museum from Spring 2024 onwards

PRE-5S

Gaun the Messages

Early Level, Pre-5s

Per group: £15 (Glasgow) or £20

Children will investigate what it was like to go shopping before we had large supermarkets. Through imaginative play and by visiting our Buttercup Dairy, children will discover the many small, traditional shops that made up our main streets, and the different products they sold.

SCN 0-04a

PRIMARY

Tenement Times

Early / First Level, Primary 1-2

Per group: £15 (Glasgow) or £20

Travel back in time to discover what home life was like in the east end of Glasgow, and how people spent their spare time and holidays. Through object handling, investigation, and role play, learners will discover in this interactive session how much life has changed for ordinary Glaswegians.

SOC 1-04a



Around a Glasgow Home Then and Now

First Level, Primary 2-4

Per class: Free (Glasgow) or £45

Using timelines and museum objects, children will compare and contrast household items from the past with those used today. Through exploring domestic technology over the last 100 years, children will examine the impact of modern inventions on domestic life, particularly for women.

SOC 1-04a; TCH 1-10a

Digital Swinging Sixties

Second Level, Primary 5–7

Per class: free (Glasgow) or £45

This workshop bring to life the colourful 1960s for all your hip wee guys and gals! Using costumes, objects and hands-on activities, groups will work independently with iPads to support learning around our 1960s displays.

SOC 2-03a

Glasgow's Hidden Legacies: The Transatlantic Slavery Connection

Second-Third Level, Primary 6–7

Per class: Free (Glasgow) or £45

This workshop explores the connections between Glasgow and the transatlantic slavery trade. Learners will discover the hidden stories behind the family portrait of an enslaver and a silver collar possibly worn by an enslaved servant. Pupils will have the opportunity to engage in group discussions and investigate historic maps to trace the legacies still visible in the city today.

SOC 2-03a

World War II: The Home Front

Second Level, Primary 5–7

Per class: Free (Glasgow) or £45

Why did people have to 'make do and mend'? And what was it like to go to school with your gas mask? Through exploring the collections and handling objects from rationing to air raids and the land girls, young people will examine the challenges people in Britain faced at that time.

SOC 2-03a

Resources

Discover the history of Glasgow Green, the city's oldest green space, with our Glasgow Green trail. Focusing on the 'gates' – or entrances – to the park, this trail covers approx. 1 mile and comes accompanied by teachers' notes and contextual images. A copy can be emailed out for printing in advance

Staying on for lunch after your workshop? Why not borrow our box of playground games to take outside the museum!





Riverside Museum

100 Pointhouse Road, Glasgow G3 8RS

Riverside Museum is the award-winning venue for Glasgow Museums' transport and technology collections, located where the River Kelvin meets the Clyde. Exhibits include recreations of Glasgow streets from past times, with shops that children can go in and explore. The museum celebrates the people who shaped Glasgow's role in shipbuilding, train manufacturing and engineering.

To book a visit phone 0141 276 9505 / 9506
or email
museums.schoolbookings@glasgowlife.org.uk

Most workshops can be adapted for ASL/
BSL – please see back page for details.

Please be aware that currently at this venue there is very limited availability of facilitated workshop sessions. However please contact the school bookings team who will aim to accommodate your requirements.

PRE 5S

People Who Help Us

Early Level, Pre-5s

Per group: £15 (Glasgow) or £20

This workshop introduces children to the people who help us in emergencies – the police, ambulance, fire services and school crossing patrol workers. Children will explore the emergency vehicles of all three services, look at what makes them useful and identifiable, and learn through object handling, activities, and play.

SOC 0-07a

PRIMARY

People Who Help Us

Early Level, Primary 1

Per class: Free (Glasgow) or £45

This workshop introduces children to the people who help us in emergencies – the police, ambulance, fire services and school crossing patrol workers. Children will explore the emergency vehicles of all three services, look at what makes them useful and identifiable, and learn through object handling, activities, and play.

SOC 0-07a



Toys and Games in the Past

Early Level, Primary 1–2

Per class: Free (Glasgow) or £45

This session explores traditional street games and supports children to compare and contrast old toys with those of today. By experiencing our old street, learners will discover how children in the past used to play; and by exploring our 50s' and 80s' toy shop displays, they will learn about different materials used in the manufacturing of toys.

SOC 0-04a; SCN 0-04a

Powerful Stuff

First Level, Primary 2–7

Per class: Free (Glasgow) or £45

How does a tram move without electricity? How can a car operate on steam? How did we fly before aeroplanes? Find all this out and more as we take an interactive look at some of the most exciting and innovative types of transport from over 100 years ago and discover how they shaped the transport we use today.

SOC 1-02a



New Victorian Travel – Self-led Trail and Handling Objects

First/Second Level, Primary 3–7

Per class: Free

A cabriolet, omnibus, tram, or cycle – which would you take to get around the city? Learn about a time when the Victorians powered forward in the worlds of technology and innovation. Analyse the impact that increased industrialisation and colonial trade had on the world today.

Lead your class by following our trail of key displays and activity prompts. Then collect a handling kit from reception – with objects to share, explore and discuss.

SOC 2-04a

Self-led Trails

Arranging your own self-led visit of the Riverside Museum? Why not ask for a copy of one of the following trails:

- Toucans and Lollipops (road safety theme for First Level learners)
- Riverside Quiz Trail (First / Second level)



St Mungo Museum of Religious Life and Art

2 Castle Street, Glasgow G4 0RH

The Museum of Religious Life and Art aims to promote respect and understanding between people of different faiths and of none. The museum is a unique resource which encourages children to engage with both world faiths and contemporary issues affecting society today.

To book a visit phone 0141 276 9505 / 9506
or email
museums.schoolbookings@glasgowlife.org.uk

Most workshops can be adapted for ASL/
BSL – please see back page for details.

PRE 5S

Superheroes of the Supernatural

Early Level, Pre-5s

Per group: £15 (Glasgow) or £20

Through storytelling, music and dance, children will discover and interact with some of the heroic characters in the museum, including the Archangels Michael and Raphael and the Hindu god Shiva Nataraja – Lord of the dance.

RME 0-07a

Bud and the Caterpillar

Early Level, Pre-5s

Per group: £15 (Glasgow) or £20

During this workshop, children will find out more about amazing cultural objects from around the world through an interactive storytelling adventure. This session encourages children to imaginatively bring a story to life using props and role-play.

LIT 0-19a; RME 0-07a

PRIMARY

World Religions

Second Level, Primary 5-7

FREE for all schools

This interactive workshop offers an introduction to world faiths and to St Mungo Museum. Each workshop focuses on one theme within the museum's collection, so please choose from one of the following options and specify when booking: Buddhism, Christianity, Hinduism, Humanism, Islam, Judaism and Sikhism. We can also facilitate sessions where the six main world religions are all looked at through group work but in less depth. This offers a primer for classes beginning to explore religion while reflecting the diversity of belief in Glasgow.

RME 2-06a



The Holocaust and Acts of Genocide

Second Level, Primary 5–7

Per class: Free (Glasgow) or £45

Through the use of objects and personal stories, this workshop will examine the survival and tragic deaths of Holocaust victims in an immersive experience. With group activities including object stories, focused investigations and discussion, pupils will deepen their understanding of human rights and persecution of people around the world while building on personal attributes such as empathy, respect, and openness.

SOC 2-01a

Pride without Prejudice – Challenging Sectarianism in Glasgow

Second Level, Primary 6–7

Per class: Free (Glasgow) or £45

This workshop uses handling objects and the collections in our galleries to support Divided City and other SOS values-based education work in schools. Through exploring sectarian language, reflecting on assumptions, and deepening understanding of prejudice and discrimination, learners build on personal attributes of empathy, respect, and openness.

RME 2-09b



New! Handling Collection

St Mungo's Museum has a small collection of handling objects connected to the six world faiths used in formal and informal learning programmes. These can be borrowed by teachers for use in classrooms if they are not already booked for use in other programmed museum workshops. Teachers will need to collect from, and return the objects to, the museum. For more information, please contact **0141 276 9505/9506** or museums.schoolbookings@glasgowlife.org.uk to put you in contact with the learning team at St Mungo's.

SECONDARY PROGRAMME

ART AND DESIGN

Critical Studies in Art at Kelvingrove

National 5 / Higher

Per group: £25 (Glasgow) or £45

We feel that the best way for learners to develop their skills in discussing and critiquing art is through seeing and exploring real works of art; identifying materials, techniques, processes and cultural context that have shaped the works viewed. During sessions learners will acquire art and design terminology which can be used within the Critical Studies exam. Choose from Portraiture or Still Life focus.

Express Yourself! – Our identities Past and Present

Burrell Collection

BGE S1-3

Per group: £25 (Glasgow) or £45

Humans throughout history have expressed their personality in different ways – through adornment, symbols, objects and trends. While exploring the concept of stereotype, handling museum objects, solving riddles in the galleries and making art using different materials and techniques, we will discuss the power of objects in telling stories and why we all need to embrace our identity, differences and uniqueness.

Creative Industries: An insight to the industry

GoMA

National 4 & 5

Per group: £45 (Glasgow) or £75

GoMA can support your Creative Industries course both in the classroom and 'behind the scenes' in the gallery through this exciting three-part workshop.

Session 1 at school: Introduction to jobs and roles within a gallery setting and the skills

Session 2 at GoMA: Learners will gain real life 'behind the scenes' insight and carry out vital research for their Creative Industries project. This Session is bespoke to the needs and interests of both the pupils and teacher.

Session 3 at GoMA or at school: GoMA staff will help learners to bring their projects to a conclusion and evaluate their work.

We have various resources to support your critical studies in art. Please visit our website <https://www.glasgowlife.org.uk/museums/learning/learning-resources>

Annual Art Competition

Our Annual Art Competition for young people runs every year from February until the end of May. Drawings must be done in-situ within one of our museum venues and entries are judged each year by contemporary artists and educators. Please book your visit in advance so we can provide further information on terms and conditions of the competition.



[Click here for more resources](#)

SECONDARY PROGRAMME

LIFE SKILLS AND EMPLOYABILITY

Employability Tours @ Glasgow Museums

Choose from Riverside Museum or The Burrell Collection

S4-6

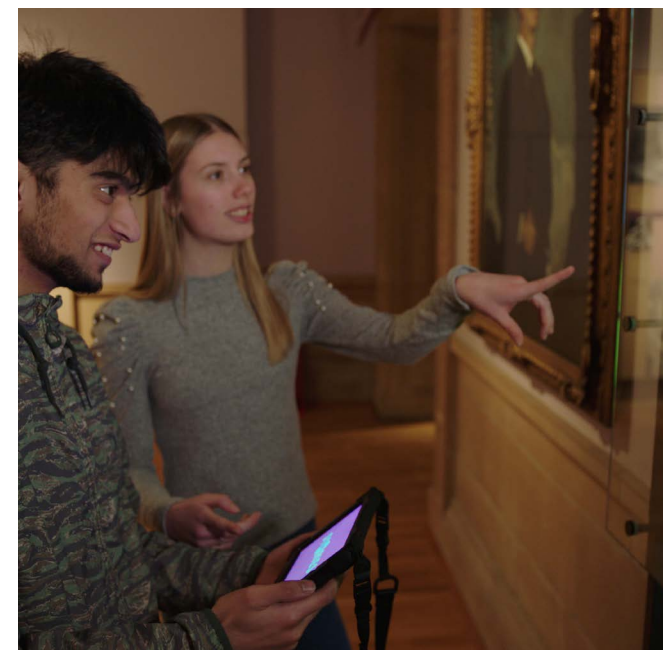
Per group: £25 (Glasgow) or £45

Take part in one of our Museum Employability Tours and find out what jobs are involved in running a world-class museum service. Pupils will meet and chat to a range of museum

staff, from those visible in the museum to others who work behind the scenes. They will find out about different career paths and the transferable skills staff need to do their jobs.

An opportunity for young people to expand their employability skills whilst developing an understanding of career choices available in museums and the wider heritage sector.

Max pupils per 90-minute tour: 20



New!

My Stories – Digital Experience

Kelvingrove Art Gallery and Museum

S1-6

Per group: free of charge

A unique, digital experience for young people offering an inclusive yet interactive introduction to the museum. This session starts in our new state-of-the-art youth space, designed by young people themselves. Learners will then work in pairs and explore the galleries using handheld devices, discovering more about the displays – and themselves – along the way. Supports the development of skills for learning, life and work.

SECONDARY PROGRAMME

SOCIAL SUBJECTS

The Holocaust and Acts of Genocide

St Mungo Museum

BGE S1–3

Per group: £25 (Glasgow) or £45

Using objects and personal stories, this workshop will examine the survival and tragic deaths of Holocaust victims in an immersive experience. With group activities including object stories, focused investigations and discussion, pupils will deepen their understanding of human rights.

The Great War – Exploring Primary Source Material

Glasgow Museums Resource Centre

BGE S1–3, National 4 & 5

Per group: £25 (Glasgow) or £45

World War I had a major impact on Scotland that affected all aspects of life, from the roles families had at home, to the duties women and men had serving at the battle front. In addition to a behind-the-scenes tour of objects in store, this workshop provides an opportunity to use and handle a varied range of primary source materials. Covers themes such as raising funds for the war effort, correspondence, rationing, nursing, bereavement, and recruitment.

Glasgow's Hidden Legacies: Transatlantic Slavery Connections

People's Palace

BGE S1–3, National 5

Per group: £25 (Glasgow) or £45

This workshop explores the connections between Glasgow and the transatlantic slavery trade. Learners will discover the hidden stories behind the family portrait of an enslaver and a silver collar possibly worn by an enslaved servant. Pupils will have the opportunity to engage in group discussions and investigate historic maps to trace the legacies still visible in the city today.

Glasgow City of Empire

Kelvingrove Art Gallery and Museum

Nat 5 / Higher

Per group: £25 (Glasgow) or £45

What impact did Glasgow's connection to Empire have on the city? And in turn how did Scot's who emigrated impact the colonies they inhabited? Students will explore these questions via our new display 'City of Empire' which focuses on Glasgow's historic connection to Empire and Slavery. Students will then reflect on contemporary migration in our new Migrant Voice photographic display.

A History of GoMA: Slavery, Empire and Contemporary Art

GoMA

S3–5

Per group: £25 (Glasgow) or £45

Explore GoMA's historic connections to slavery and empire with an object handling session, discussion and practical art activity. Discover how two contemporary artists, Manu Kurewa and Heshani Sothiraj Eddlestohave, have responded to these museum objects through film and story. [SOC 3-16a](#); [EXA 3-03a](#); [HWB 3-09a](#)

Trails and Resources

Teaching Glasgow's Connection to Transatlantic Slavery – Digital Resource

This teaching resource focuses on Glasgow's connection to the transatlantic slavery trade and includes more non-Eurocentric viewpoints, drawing on original museum objects and archival material.

Glasgow's Connection to Transatlantic Slavery – Self-led Walking Tour

This self-led walking tour focuses on the city's public buildings and street names connected to the transatlantic slavery trade.

Please contact the school bookings team on **0141 276 9505/06** or museums.schoolbookings@glasgowlife.org.uk to obtain a copy of the resource including teachers' notes.

SECONDARY PROGRAMME

SCIENCE



Field Teaching RSPB Scotland

Meeting point: Kelvingrove Art Gallery and Museum
BGE S1-3

All sessions are FREE

An exciting new programme of workshops in Kelvingrove Park led by the RSPB Scotland. Putting topical science into context with hands-on, outdoor learning. We can also adapt the session for groups who require additional support for learning.



Explore Urban Nature

Explore the wonderful wildlife living right here in Glasgow! We'll learn about different habitats, species and how they've adapted to living in an urban environment.

Beginner Birders

Practice your identification skills while learning about different habitats and bird behaviour. Activities include how to use ID guides, binoculars and carrying out surveys.

Urban Wildlife Detectives

Discover the different wildlife species living in our city through an introduction to animal tracks and signs. We'll look for footprints, feathers, feeding signs and more, making field notes and sketches as we go.

Climate Change Champions

Understand what climate change is, its impacts and what actions we can take for a sustainable planet. We'll model the greenhouse effect to visualise how carbon is becoming stored in our atmosphere before having a go at designing a more climate and nature friendly city.

RELIGIOUS AND MORAL EDUCATION

Pride without Prejudice – Challenging Sectarianism in Glasgow

St Mungo Museum
BGE S1-3

Per group: £25 (Glasgow) or £45

This workshop uses handling objects and the collections in our galleries to support 'Scarred for Life' and other SOS values-based education work in schools. Through exploring sectarian language, reflecting on assumptions, and deepening understanding of prejudice and discrimination, learners build on personal attributes of empathy, respect, and openness.

World Religions

St Mungo Museum
BGE National 4 & 5 and Higher
Per group: £25 (Glasgow) or £40

Our team at St Mungo Museum of Religious Life and Art can use their links with local faith communities to build tailored experiences. Think about visiting a place of worship with us followed by a workshop in the Museum. Our magnificent objects can encourage pupils to reflect on their personal values and relationship to wider society. These sessions deepen classroom-based learning through object handling and facilitated discussions. Please contact our Learning Team well in advance of anticipated visits to discuss content.

Before Your Visit

Remember to book – even if you're coming self-led. Call **0141 276 9505 / 9506** or e-mail museums.schoolbookings@glasgowlife.org.uk

Pre-visit information for the venue you are visiting will be emailed along with your confirmation. Copies are also available on our website: www.glasgowlife.org.uk/museums/learning/pre-visit-information

All our venues, and the educational activities that take place within them, have been risk-assessed. These are internal documents that we do not e-mail out to schools. As teachers know their pupils best, we advise them to do their own risk assessment of their visit. We can provide additional information on our workshops to support this.

We can arrange for a BSL interpreter to attend your session, free of charge.

If you have pupils who require additional support in preparing for a visit, why not ask for a link to our digital visual storyboards which can be downloaded from the website?

Travelling to our venues

Why not keep costs down by bringing your group by public or community transport? Smaller groups, such as nurseries, can access community transport while larger groups can come by subway, train or bus. Please get in touch if you wish assistance in planning your journey by public transport to one of our venues.

"Our Primary 6 class went on their school trip to Kelvingrove Museum by train. Using Scotrail's 'Kids for a Quid' scheme buying tickets was simple and cost effective. We got off at the Exhibition Centre which was a 20 minute walk to the museum. We would thoroughly recommend travelling by train!"

Muiredge Primary, Uddingston

After Your Visit

Find out more about our collections by visiting the Teachers Topics section of Collections Navigator www.glasgowlife.org.uk/museums/collections

Check out our comprehensive suite of learning resources: <https://www.glasgowlife.org.uk/museums/learning/learning-resources>

🐦 Share your pictures on twitter: [@museum_learning](https://twitter.com/museum_learning)

Keen to stay up to date with our exhibitions and help shape our future learning programmes? Ask about joining our group of Museum Champions (primary teachers) and Art Ambassadors (secondary Art and Design teachers).

